

Data communications capabilities let you transfer data between two CASIO PV Units, between a PV Unit and a BN-10/BN-20 Unit, or between a PV Unit and a BN-10A/BN-20A/BN-40A Unit. You can also receive data from a CASIO SF, CSF, or NX Series Unit, and communicate with a personal computer using PC sync for Windows.

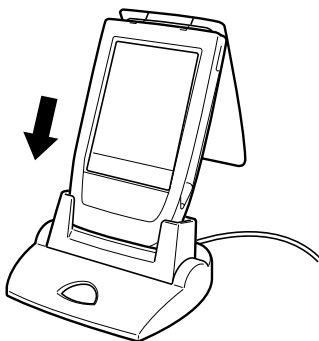
- See the manual that comes with PC sync for Windows for details on connecting to a computer and setting up for communication.

## Using the Cradle

The PV Unit comes with a cradle that helps to make data communications quicker and easier. The following procedures describe how to attach the PV Unit to and detach it from the cradle.

### To connect the PV Unit to the cradle

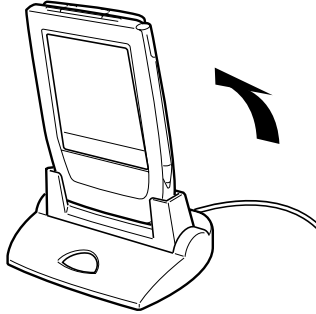
1. Turn off PV Unit power.
2. Place the PV Unit onto the cradle.
  - Gently but firmly press down on the PV Unit to ensure that it is inserted into the cradle as far as it will go.



---

## To detach the PV Unit from the cradle

1. Turn off PV Unit power.
2. Angle the PV Unit forward as shown in the illustration, and then lift it straight up.

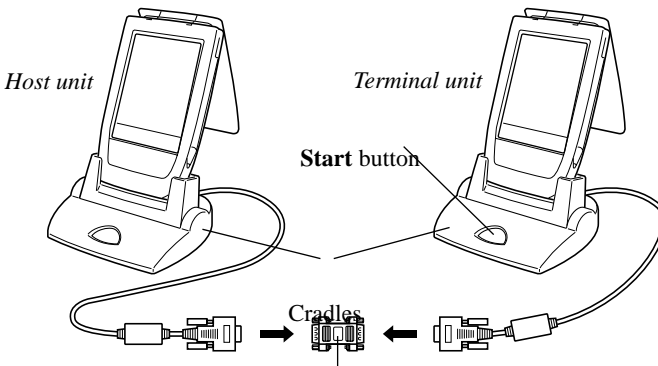


## Data Communications Between Two PV Units

This section describes how to set up and communicate between two PV Units.

### To connect two PV Units

1. Make sure that the power of both units is turned off.
2. Place the PV Units onto their cradles.
  - Gently but firmly press down on the PV Units to ensure that they are inserted into the cradles as far as they will go.
3. Use an optional SB-90 9-9 pin connector to connect the two cradles to each other.



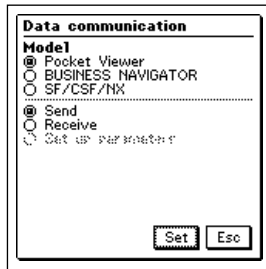
SB-90 9-9 pin connector

- All data communication settings must be made on only one of the PV Units only. This unit is called the *host unit*, while the other unit is called the *terminal unit*.

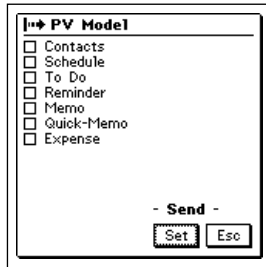
### To send data from the host unit to the terminal unit

1. After connecting the two PV Units, turn on the host unit.
  - Terminal unit power should still be off at this time.
2. Display the list view in a mode whose data can be sent with this setup.
  - This configuration supports transfer of Contacts (Business, Personal, Untitled 1-5), Memo (Untitled 1-5), Schedule, To Do, Reminder, Expense Manager, and Quick-Memo data.

3. Tap the **Menu Bar** icon to display the menu bar, and then tap **System – Data communication**.



4. Tap the button next to **Pocket Viewer** to specify the data communication configuration.
5. Tap the button next to **Send**.
6. Tap **Set**.



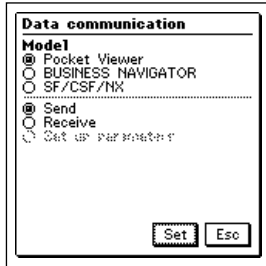
7. Tap the check boxes to specify the data you want to send (checked) and the data you do not want to send (unchecked).
8. After everything is the way you want it, tap **Set**.



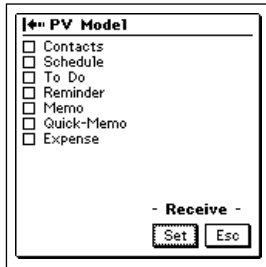
9. Turn on the power of the terminal unit and then press the **Start** button on its cradle to start the data transfer operation.

**To receive data from the terminal unit on the host unit**

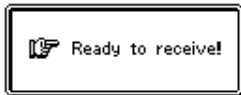
1. Perform steps 1 through 4 under “To send data from the host unit to the terminal unit”.



2. Tap the button next to **Receive**.
3. Tap **Set**.



4. Tap the check boxes to specify the data you want to receive (checked) and the data you do not want to receive (unchecked).
5. After everything is the way you want it, tap **Set**.



6. Turn on the power of the terminal unit and then press the **Start** button on its cradle to start the data transfer operation.

---

## Notes

- The above procedures can be used to send or receive all data in specific modes only. You cannot send or receive individual data items.
- Data communication can be interrupted at any time by pressing **Esc**. This causes the message **Stopped!** to appear on the displays of both units.
- The message **Communication error!** appears on the displays of both units whenever data communication is interrupted due to cable disconnection, line noise, or other abnormal condition.
- If the secret memory area is accessed on a unit receiving data, the received data is stored in the secret memory area, regardless of the memory area the data is in on the sending unit.
- Transferring data from the PV-S250/PV-S450 to a PV-100 or PV-200 causes all euro symbols to be replaced by spaces.
- The size of the PV-S250/PV-S450 screen is 160 · 160 dots. Transferring PV-S250/PV-S450 Quick-Memo data to a PV-100 or PV-200, which both have 98(V) · 124(H)-dot screens, causes the right side and bottom part of the Quick-Memo image to be cut off in order to fit the PV-100/PV-200 screen.

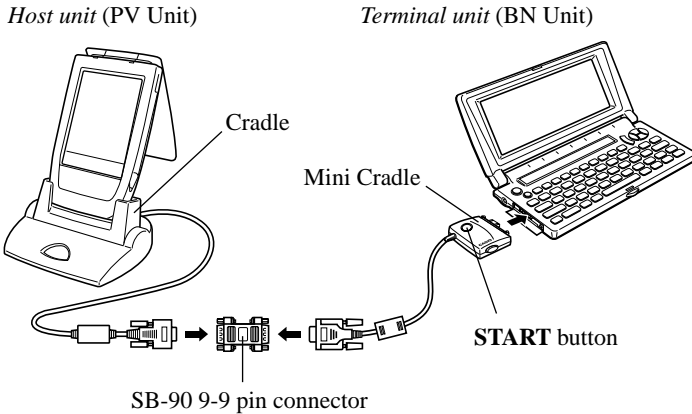
## ■ Data Communications Between a PV Unit and a BN Unit

This section describes how to set up and communicate between a PV Unit and a BN Unit (BN-10/BN-20 or BN-10A/BN-20A/BN-40A).

### To connect a PV Unit to a BN Unit

1. Make sure that the power of both units is turned off.
2. Open the cover of the Mini Cradle port of the BN Unit, and connect its Mini Cradle to the port.
3. Place the PV Unit onto its cradle.
  - Gently but firmly press down on the PV Unit to ensure that it is inserted into the cradle as far as it will go.

4. Use an optional SB-90 9-9 pin connector to connect the PV Unit cradle to the BN Unit Mini Cradle.

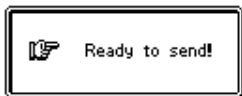


- All data communication settings must be made on the PV Unit, which is the *host unit*. The BN Unit is the *terminal unit*.

### To send data from the PV Unit to the BN Unit

1. After connecting the two units, turn on the PV Unit.
  - BN Unit power should still be off at this time.
2. Display the list view in a mode whose data can be sent with this setup.
  - This configuration supports transfer of Contacts (Business, Personal), Memo, Schedule, To Do, and Reminder data.
  - Calendar and Expense Manager data cannot be transferred.
  - Contacts Untitled 1-5 data is transferred as Personal data.
  - Memo Untitled 1-5 data is transferred as Memo data (no category).
3. Tap the **Menu Bar** icon to display the menu bar, and then tap **System – Data communication**.

4. Tap the button next to **BUSINESS NAVIGATOR** to specify the data communication configuration.
5. Tap the button next to **Send**.
6. Tap **Set**.
7. Tap the check boxes to specify the data you want to send (checked) and the data you do not want to send (unchecked).
8. After everything is the way you want it, tap **Set**.

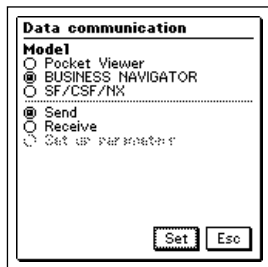


9. Turn on the power of the BN Unit and then press the **START** button on its cradle to start the data transfer operation.
  - The following shows the relationship between data when sent from the PV Unit to a BN Unit.

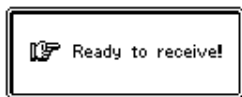
| Mode                   | PV Unit   | BN Unit   |
|------------------------|---|---|
| <b>Contacts</b>        | Untitled 1-5  | PERSONAL<br>• Check <b>Contacts (1-5)</b> as the data type to send this data. |
|                        | Category names  | Not transferred   |
|                        | Item (field) names  | Not transferred   |
| <b>To Do</b>           | Category names  | Not transferred   |
|                        | Due date  | Due date  |
| <b>Memo</b>            | Untitled 1-5  | MEMO<br>• Check <b>Memo (1-5)</b> as the data type to send this data.         |
|                        | Category names  | Not transferred   |
| <b>Quick-Memo</b>      | No corresponding BN Mode  |   |
| <b>Expense Manager</b> | Not transferred. Use the data communication software that comes with the PV Unit to transfer this data. |   |

## To receive data from the BN Unit on the PV Unit

1. Perform steps 1 through 4 under “To send data from the PV Unit to the BN Unit”.



2. Tap the button next to **Receive**.
3. Tap **Set**.
4. Tap the check boxes next to specify the data you want to receive (checked) and the data you do not want to receive (unchecked).
5. After everything is the way you want it, tap **Set**.



6. Turn on the power of the BN Unit and then press the **START** button on its cradle to start the data transfer operation.

### Notes

- The above procedures can be used to send or receive all data in specific modes only. You cannot send or receive individual data items.
- Data communication can be interrupted at any time by tapping **Esc**. This causes the message **Stopped!** to appear on the displays of both units.
- The message **Communication error!** appears on the displays of both units whenever data communication is interrupted due to cable disconnection, line noise, or other abnormal condition.
- If the secret memory area is accessed on a unit receiving data, the received data is stored in the secret memory area, regardless of the memory area the data is in on the sending unit.

- Transferring data from the PV-S250/PV-S450 to the BN Unit causes all euro symbols to be replaced by spaces.
- The following shows the relationship between data when received by the PV Unit from a BN Unit.

| Mode             | BN Unit  | PV Unit           |
|------------------|----------|-------------------|
| <b>Contacts</b>  | PERSONAL | Personal          |
|                  | BUSINESS | Business          |
| <b>Scheduler</b> | SCHEDULE | Schedule          |
|                  | TO DO    | To Do             |
|                  | REMINDER | Reminder          |
| <b>Memo</b>      | MEMO     | Memo (Untitled 1) |

- The **Company** entry of the PV Unit is equivalent to the **Employer** entry of a BN Unit.

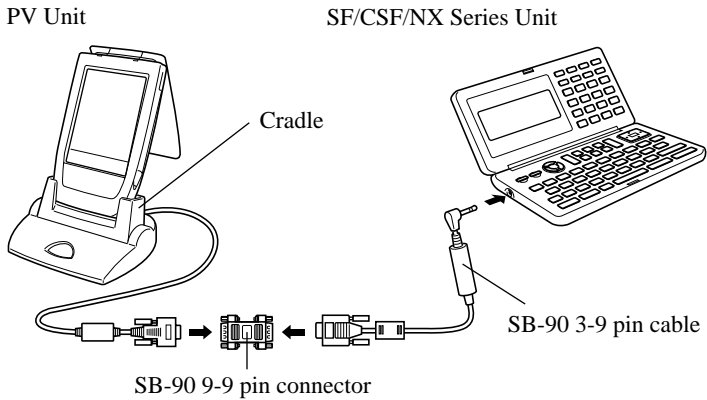
## ■ Receiving Data From an SF/CSF/NX Series Unit

This section describes how to set up and receive data from an SF/CSF/NX Series Unit. Note that you cannot send data from a PV Unit to an SF/CSF/NX Series Unit. In this configuration, you must set a number of communication parameters for correct operation.

### To connect a PV Unit and an SF/CSF/NX Series Unit

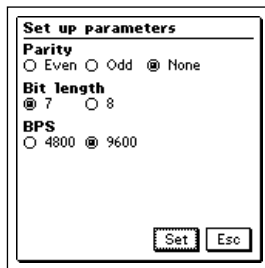
1. Make sure that the power of both units is turned off.
2. Place the PV Unit onto its cradle.
  - Gently but firmly press down on the PV Unit to ensure that it is inserted into the cradle as far as it will go.
3. Open the cover of the data communications jack of the SF/CSF/NX Series Unit, and connect an optional SB-90 3-9 pin cable.

4. Use an optional SB-90 9-9 pin connector to connect the PV Unit cradle to the other unit's cable.



### To make communication parameter settings

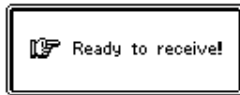
1. After connecting the two units, turn on the PV Unit.
2. Display the list view in a mode whose data can be received with this setup.
  - This configuration supports receipt of Contacts, Memo, Schedule and To Do data.
  - REMINDER 1, REMINDER 2, EXPENSE, CALENDAR, SKETCH, and FREE FILE data cannot be received.
3. Tap the **Menu Bar** icon to display the menu bar, and then tap **System – Data communication**.
4. Tap the button next to **SF/CSF/NX**.
5. Press the button next to **Set up parameters** and then tap **Set**.



- 
6. Tap the buttons under **Parity**, **Bit length**, and **BPS** to make the settings you want.
    - Note that the settings you make here must match those of the connected SF/CSF/NX Series Unit. Otherwise, proper data communication will be impossible.
  7. After making all the settings you want, press **Set** to register them, and return to the screen in step 4, above.
    - Now you can continue with the following data receive procedure.

### To receive data from an SF/CSF/NX Series Unit

1. After connecting the two units, turn on the PV Unit.
2. Display the list view in a mode whose data can be received with this setup.
  - This configuration supports receipt of Contacts, Memo, Schedule and To Do data.
  - REMINDER 1, REMINDER 2, EXPENSE, CALENDAR, SKETCH, and FREE FILE data cannot be received.
3. Tap the **Menu Bar** icon to display the menu bar, and then tap **System – Data communication**.
4. Tap the button next to **SF/CSF/NX**.
  - At this time you could perform steps 5 through 7 under “To make communication parameter settings” above to make communication set up parameter settings if you want.
5. Tap **Set**.



6. Perform the required operations on the SF/CSF/NX Series Unit to send data. See the manual that comes with the unit you are using for details.

### Notes

- Data communication can be interrupted at any time by tapping **Esc**. This causes the message **Stopped!** to appear on the display of the PV Unit.
- The message **Communication error!** appears on the display of the PV Unit whenever data communication is interrupted due to cable disconnection, line noise, or other abnormal condition.
- If the secret memory area of the PV Unit is accessed when you receive data, the data is stored in the secret memory area, regardless of the memory area where it was stored in the sending unit.
- Data cannot be received from the following CASIO units: SF-A Series, SF-5580, 5780, 5980, 5580E, 5780E, 5980E, 5590SY, 5790SY, 5990SY, 5590SYE, 5790SYE, 5990SYE, 6500SY, 6700SY, 6900SY, 7100SY, 7200SY.
- REMINDER1, REMINDER2, EXPENSE, CALENDAR, and SPREADSHEET data cannot be received from an SF, CSF, or NX Unit.
- NX Unit PERSONAL, FAMILY, TIMETABLE, and GOLF mode data cannot be received.
- Data from SKETCH, FREE FILE, and other SF, CSF, and NX Unit modes for which there is no equivalent PV modes cannot be received.
- Data from ILLUSTRATION, P.O. BOX, TELEX NUMBER, and other SF, CSF, and NX Unit entries for which there is no equivalent PV entries cannot be received.
- All data is received in monotone, without any color attributes.
- In the case of SF Unit data that is mark protected against deletion, the mark protection is ignored when received by the PV Unit.