

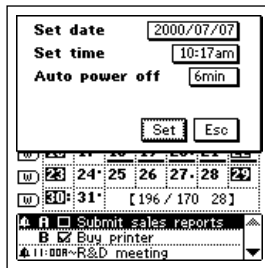
The **System** menu provides you with a number of items that you can use to set up the unit to suit your particular needs.

Note that the **System** menu is available on the menu bar while the Mode Menu is on the display.

Setting the Date, Time, and Auto Power Off Interval	166
Turning Sound On and Off	167
Setting a Daily Alarm Time	168
Setting the Date, Time, Calendar, and Keyboard Formats	169
Setting the System Language (PV-250X/PV-450X only)	170
Adjusting Display Contrast	171
Calibrating the Touch Screen	171
To calibrate the touch screen	171
Checking Memory Capacity	172
To check memory capacity	172
Memory Management	172
To perform memory management	173

Setting the Date, Time, and Auto Power Off Interval

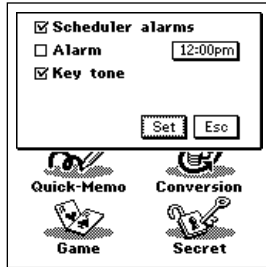
1. Tap the **Menu Bar** icon to display the menu bar, and then tap **System – Set date/time**.
 - You can also display the date/time setting screen by tapping the clock on the pop up tool screen (page 112).



2. Tap the date next to **Set date**. This causes a date keyboard to appear.
3. Use the date keyboard to input the date you want to set, and then tap **NEXT**.
 - You can specify a date within the range of January 1, 1901 to December 31, 2099.
4. After setting the date, tap the time next to **Set time**. This causes a time keyboard to appear.
5. Use the time keyboard to input the time you want to set, and then tap **NEXT**.
6. After setting the time, tap the value next to **Auto power off**.
 - Each tap of the value changes it in the cycle: 1 fi 3 fi 6 fi 1, etc.
 - The value you set specifies how many minutes the unit allows to pass without any operation being performed. After the specified number of minutes, power is turned off automatically.
7. Tap **Set** to register your settings.

Turning Sound On and Off

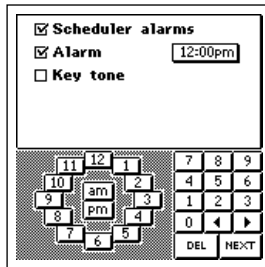
1. Tap the **Menu Bar** icon to display the menu bar, and then tap **System – Sound**.



2. Tap a check box to toggle the corresponding item's sound on (checked) and off (unchecked).
 - **Scheduler alarms** turns all Scheduler Mode alarms on and off.
 - **Alarm** turns the daily alarm on and off.
 - **Key tone** turns the key input confirmation tone on and off.
 - See “Setting a Daily Alarm Time” on page 168 for details about setting the alarm time.
3. Tap **Set** to register your settings.

Setting a Daily Alarm Time

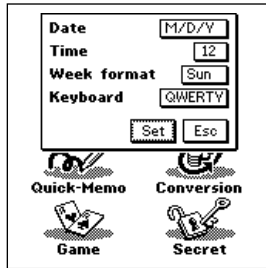
1. While the sound on/off setting screen is on the display in the above procedure, tap on the time to the right of the **Alarm** item.
 - You can also display the alarm setting screen by tapping the alarm indicator on the pop up tool screen (page 112) or the clock screen (page 113).



2. Input the time you want to set, and then tap **NEXT**.
 - While the Daily Alarm is turned on, a tone sounds for about 20 seconds at the preset time each day.
 - You can stop a sounding alarm by tapping anywhere on the screen.

Setting the Date, Time, Calendar, and Keyboard Formats

1. Tap the **Menu Bar** icon to display the menu bar, and then tap **System – Format**.



2. Tap the date format next to **Date**.
 - Each tap of the date format changes it in the cycle: M/D/Y fi D/M/Y fi Y/M/D fi M/D/Y, etc.
3. After setting the date format, tap the time format next to **Time**.
 - Each tap of the time format toggles it between 12 and 24.
4. After setting the time format, tap the day of the week next to **Week format**.
 - Each tap of the day of the week toggles it between Sun and Mon.
5. After setting the calendar format, tap the keyboard format next to **Keyboard**.
 - Each tap of the keyboard format changes it in the cycle: QWERTY fi AZERTY fi QWERTZ fi QWERTY, etc.
6. Tap **Set** to register your settings.

Setting the System Language (PV-250X/PV-450X only)

1. Tap the **Menu Bar** icon to display the menu bar, and then tap **System – Language**.



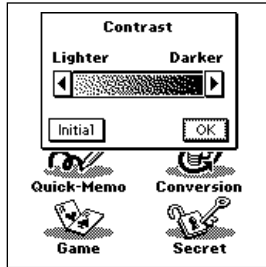
2. Tap the button next to the language you want to select as the system language.
3. Tap **Set** to register your setting.
 - All on-screen text messages appear in the language you set as the system language.

Note

- The system language you set also affects the keyboard format (page 179) and the code keyboard contents (page 152).

Adjusting Display Contrast

1. Tap the **Menu Bar** icon to display the menu bar, and then tap **System – Contrast**.



2. Tap ◀ to make the figures on the screen lighter, or ▶ to make them darker.
3. To return to the initial default contrast setting, tap **Initial**.
4. After the setting is the way you want it, tap **OK**.

Calibrating the Touch Screen

Use the following procedure to calibrate the touch screen after initializing the unit, or if you feel that the function performed when you tap the screen does not match the button or command you tapped.

To calibrate the touch screen

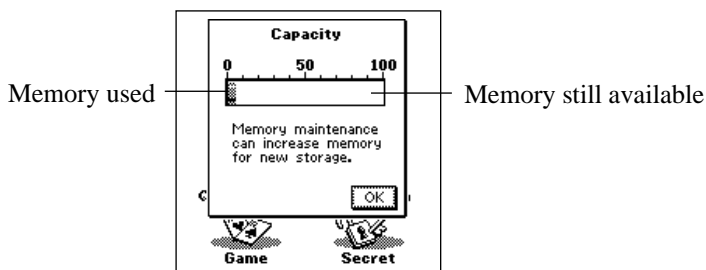
1. Tap the **Menu Bar** icon to display the menu bar, and then tap **System – Touch Panel Alignment**.
2. Tap the center of each of the four cross marks as they appear on the screen.

Checking Memory Capacity

Use the following procedures when you want to check current memory capacity.

To check memory capacity

1. Tap the **Menu Bar** icon to display the menu bar, and then tap **System – Capacity**.



2. Tap **OK** to clear the memory capacity screen.

Memory Management

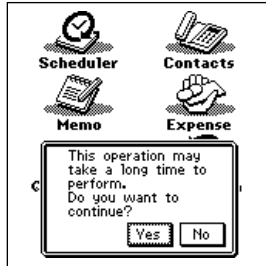
The memory of your PV Unit is designed to make your normal data input and recall operations as quick and efficient as possible. After repeated storage and deletion of data, however, you may find that you are unable to store new data, even after you have deleted some data from memory. When this happens, you need to perform the following “memory management” procedure, which cleans up and rearranges unused memory to make it available for storage of more data.

Note

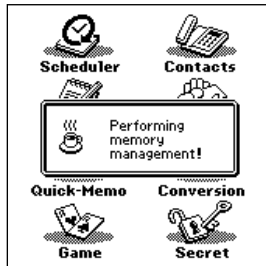
- When you need to perform memory management depends entirely on how often you delete data from memory and store new data. The more you delete and store, the sooner you will need to perform the memory management procedure.

To perform memory management

1. Tap the **Menu Bar** icon to display the menu bar, and then tap **System – Memory management**.



2. In response to the message that appears, tap **Yes** to start memory management or **No** to close the dialog box without doing anything.
- The message shown below appears after you tap **Yes** to start memory management.



- You can tap **Esc** at any time to interrupt the memory management procedure.

