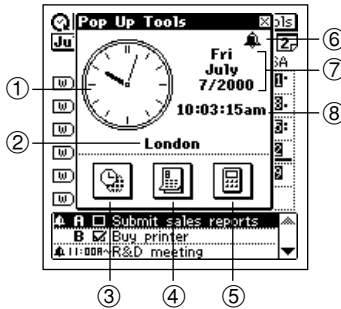


The pop up tools of the PV Unit provide you with instant access to a calculator, a calendar, and a clock whenever you need them.

Displaying the Pop Up Tool Screen	112
Using the Clock Screen	112
To display the clock screen	113
To make one of the clocks the main clock	113
To select a time zone city	114
To switch between standard time and daylight saving time (DST)	114
Using the Calculator Screen	115
To display the calculator	115
Calculator Keys	116
To perform calculations	117
To perform constant calculations	118
To correct entries during calculations	118
About calculation errors	119
To clear an error	119
Next Appointment Screen	120
To display the next appointment screen	120

Displaying the Pop Up Tool Screen

While a screen that has a **Tools** button in its upper right-hand corner is on the display, tap **Tools** to display the pop up tool screen.



- ① Clock
(Tap to display date/time setting screen on page 166.)
- ② Home city
- ③ Clock icon
- ④ Calendar icon
- ⑤ Calculator icon
- ⑥ Alarm indicator
(Tap to display alarm setting screen on page 168.)
- ⑦ Current date
- ⑧ Current time

Important!

- You can use only one pop up tool at a time. This means the calculator screen will not appear while the clock screen is on the display, etc.

Using the Clock Screen


The clock screen shows two clocks and the cities whose times are displayed on the clocks. It also shows whether daylight saving time (summer time) is set for either clock, and the date in the city of the main (currently selected) clock.

To display the clock screen

On the pop up tool screen, tap the  icon.



- | | |
|------------------------------|--|
| ① Date in city of main clock | ⑦ Alarm indicator |
| ② Time in city of main clock | (Tap to display alarm setting screen on page 168.) |
| ③ Clock 1 city name | ⑧ Daylight saving time indicator |
| ④ Main clock | ⑨ Clock 2 |
| ⑤ Clock 2 city name | |
| ⑥ Clock 1 | |

- Holding the stylus on Clock 1 or Clock 2 causes the date and time for the clock to appear in the first two lines of the clock screen.
- You can close the clock screen by tapping .

To make one of the clocks the main clock

1. While the clock screen is on the display, tap the button (○) to the left of the city name whose clock you want to make the main clock.
2. In response to the confirmation message that appears, tap **Set** to change the main clock or **Esc** to close the dialog box without doing anything.

Important!

- The time being kept by the main clock affects all alarms and other date-sensitive data currently in PV Unit memory. If you set an alarm to sound at 11:00 a.m. while Tokyo time is being used for the main clock, changing to New York time, for example, will cause the alarm to sound at 11:00 a.m. New York time.
- Changing the main clock automatically resets the seconds count of the clock to 00.

To select a time zone city

1. On the clock screen, tap the city name you want to change.



2. In the index at the bottom of the display, use the stylus to tap the letter that begins the name of the city you want to select.
3. Highlight the name of the city you want to select by tapping it or using the **Action** control.
4. When the city you want is highlighted on the screen, tap **Set** to register it and close the setting screen.

To switch between standard time and daylight saving time (DST)




DST (summer time) setting

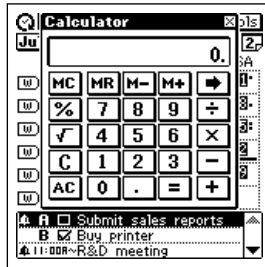
On the clock screen, tap on the DST (summer time) setting of one of the clocks to toggle it between DST on (☀) and DST off (no indicator).



Using the Calculator Screen

This screen provides you with a 12-digit calculator that can perform a variety of calculations.

To display the calculator



On the pop up tool screen, tap the  icon.



- You can also display the calculator in certain modes by tapping the  button in the data input tool bar.
- You can close the calculator screen from the display by tapping .

Calculator Keys

The following describes the functions of the calculator screen keys.

- Use the number keys to input values.
- **MC** clears calculator memory.
- **MR** recalls calculator memory contents.
- **M-** subtracts the currently displayed value from memory contents. Tapping **M-** in place of = at the end of a calculation subtracts its results from memory contents.
- **M+** adds the currently displayed value to memory contents. Tapping **M+** in place of = at the end of a calculation adds its results to memory contents.
- Tap +, -, ×, and ÷ to input the corresponding arithmetic operation.
- = executes the calculation and displays its results.
- **AC** clears the calculator (except the calculator memory).
- **C** clears the display without clearing calculator memory.
- Use √ for square root calculations.
- Use % for percent calculations.
- Tapping ➡ shifts the displayed value to the right, cutting off the rightmost digit.
- If you displayed the calculator by tapping the  button in a data input tool bar, tapping  copies the calculation result. **Edit – Paste** pastes the copied result at the current cursor location.

To perform calculations

$53 + 123 - 63 =$	$53 \text{ [+] } 123 \text{ [-] } 63 \text{ [=]}$	0.
$963 \cdot (23 - 56) =$	$23 \text{ [-] } 56 \text{ [x] } 963 \text{ [=]}$	113.
$(56 \cdot 3 - 89) , 5.2 + 63 =$	$56 \text{ [x] } 3 \text{ [-] } 89 \text{ [+] } 5.2 \text{ [+] } 63 \text{ [=]}$	- 31'779.
$1234567890 \cdot 741852 =$	$1234567890 \text{ [x] } 741852 \text{ [=]}$	78.1923076923
$\sqrt{3} \cdot 5 =$	$3 \text{ [\sqrt{ }] } 5 \text{ [x] } 5 \text{ [=]}$	E 915.866658332
$12 \text{ + } 23 =$	$23 \text{ [+] } 23 \text{ [=]}$	915.866658332
$45 \text{ + } 23 =$	45 [=]	0.
$78 \text{ + } 23 =$	78 [=]	8.6602540378
$7 \text{ - } 5.6 =$	$5.6 \text{ [-] } 7 \text{ [=]}$	K + 35.
$2 \text{ - } 5.6 =$	2 [=]	K + 68.
$2.3 \cdot 12 =$	$12 \text{ [x] } 2.3 \text{ [=]}$	K + 101.
$4.5 \cdot 12 =$	4.5 [=]	K - 1.4
$45 \text{ } \underline{\underline{9.6}} =$	$9.6 \text{ [+] } 45 \text{ [=]}$	K - - 3.6
$78 \text{ } \underline{\underline{9.6}} =$	78 [=]	K \cdot 27.6
12% of 1500	$1500 \text{ [x] } 12 \text{ [%]}$	K \cdot 54.
Percentage of 660 against 880	$660 \text{ [+] } 45 \text{ [=]}$	K , 4.6875
15% add-on of 2500	$2500 \text{ [x] } 15 \text{ [%] } \text{ [+]}$	K , 8.125
25% discount of 3500	$3500 \text{ [x] } 25 \text{ [%] } \text{ [-]}$	180.
What will the selling price and profit be when the purchasing price of an item is \$480 and the profit rate to the selling price is 25%?	$480 \text{ [+] } 25 \text{ [%]}$	75.
If you made \$80 last week and \$100 this week, what is the percent increase?	$100 \text{ [-] } 80 \text{ [%]}$	2'875.
$80 \cdot 9 = 720$	$80 \text{ [x] } 9 \text{ [M+]}$	2'625.
$\rightarrow) 50 \cdot 6 = 300$	$50 \text{ [x] } 6 \text{ [M-]}$	640.
$20 \cdot 3 = 60$	$20 \text{ [x] } 3 \text{ [M+]}$	160.
<hr style="width: 100px; margin-left: 0;"/> 480	 [MR]	25.
		M 720.
		M 300.
		M 60.
		M 480.

To perform constant calculations

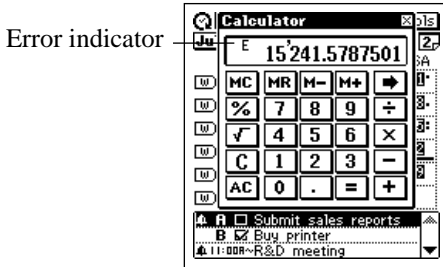
1. On the calculator screen, input the first value of the operation, tap an arithmetic operator key twice, and then input the second value of the operation.
 - You can perform a constant calculation using $+$, $-$, \times , or \div .
 - The first value you input (the one to the left of the arithmetic operator) is the one that will be used as the constant.
 - Tapping an arithmetic operator key twice causes the indicator **K** to appear on the display to indicate that a constant calculation is being performed.
2. Tap $=$ to display the result of the operation.
 - Inputting $4 \times \times 2 =$ would produce a result of 8.
3. Tap $=$ again to multiply the result by the constant.
 - Tapping $=$ again with the example shown under step 2 would produce a result of 32 ($8 \cdot 4$).
 - Each subsequent tap of $=$ multiplies the last result obtained by the constant. Continuing with the above example, tapping $=$ would produce the following results: $= 128$ ($32 \cdot 4$), $= 512$ ($128 \cdot 4$), $= 2048$ ($512 \cdot 4$), and so on.

To correct entries during calculations

- If you enter a wrong value, tap **C** to clear the value and then input the correct one.
- If you tap the wrong arithmetic key ($+$, $-$, \times , \div), simply tap the correct arithmetic key before inputting anything else.

About calculation errors

An error indicator appears on the display and further calculation becomes impossible whenever an error occurs.



Any of the following conditions produces an error.

- Whenever the number of digits in the mantissa of an intermediate or final result exceeds 12
- Whenever the number of digits in the mantissa of a value in calculator memory exceeds 12 digits. In this case, the PV Unit automatically retains the last value stored that did not exceed 12 digits.
- Division by zero
- Attempting to calculate the square root of a negative value

To clear an error

Tap **C** to clear an error and continue with the same calculation from the point immediately before the error occurred.

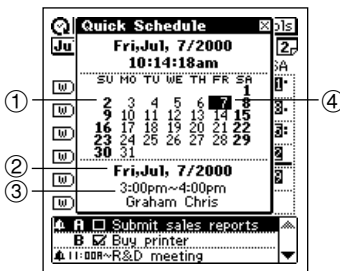
To clear the entire calculation and start again, tap **AC**.

Next Appointment Screen


This screen shows a display of the current month, along with details about the next appointment scheduled from the current time and date, as kept by the main clock (if any).

To display the next appointment screen

On the pop up tool screen, tap the  icon.



- ① Current month
- ② Date for which appointment is scheduled
- ③ Next appointment details
- ④ Next appointment

- The current month is determined in accordance with the time and date as kept by the main clock.
- The next appointment details area shows the next Schedule item or Reminder item that includes time data. It does not show any Schedule or Reminder items that do not include time data.
- The next appointment details area is blank when there is no future appointment scheduled.
- You can close the next appointment screen by tapping .