

FA-B30 Version 1.0

Basic Label Printing Software

For Windows®

User's Guide

This Label Printing Software can be used with a number of different Basic Label Printer models.

- See [page 11](#) of this manual for information about supported printer models.
- Some printer models may not support certain functions of this software.

Important!

Please keep this User's Guide and all information handy for future reference.

Important!

- All rights to this User's Guide and the software that accompanies it shall revert to CASIO COMPUTER CO., LTD.
- Microsoft® and Windows® are registered trademarks or trademarks of Microsoft Corporation in the United States and/or other countries.
- Pentium® is a registered trademark of Intel Corporation.
- True Type® is a registered trademark of Apple Computer, Inc. in the United States and other countries.
- Other product and company names used in this manual may be trademarks or registered trademarks of others.

Copyright © 2002 CASIO COMPUTER CO., LTD. All rights reserved.

- Except as required for normal use of this software or for backup purposes, you are not allowed to copy this manual or the software either in part or in their entirety without written permission from CASIO COMPUTER CO., LTD.

Be sure to read this manual carefully and familiarize yourself with proper operating procedures before trying to use the software. Keep the manual in a safe place for future reference when required.

User's Guide Precautions

- Contact a nearby dealer whenever you require servicing.
- Note that the manufacturer shall not be held liable for any loss or claims by third parties which may arise out of the use of this product.
- Note that the manufacturer shall not be held liable for any damages incurred as a result of data loss caused by malfunctions, repairs, or interruption of power supply.
- It is up to the user to keep backup records of important data.
- The contents of this User's Guide were prepared before the final version of the FA-B30 Basic Label Printing Software was complete. Because of this, there may be slight discrepancies between the features, functions, and operations described in the User's Guide and how the application actual works.

- FA-B30 Version 1.0 Basic Label Printing Software is designed to run under Windows® 98, 98SE, Me, 2000 Professional, and XP.
- Certain computer system configurations can make it impossible for this software to run properly.



Contents

About this manual...	6
Getting Acquainted	8
FA-B30 Basic Label Printing Software Functions	8
Supported Label Printer Models	11
Installing the FA-B30 Basic Label Printing Software	12
Shortcut Menu Operation	19
Disabling Auto Startup of the FA-B30 Software	19
Uninstalling the FA-B30 Software	20
Starting Up and Quitting the FA-B30 Software	22
Start Up	22
Quitting	23
User Interface	24
Input Panel	24
Toolbar Button Name Display	27
Preview Window	28
Preview Dialog Box	29
Shortcut Menus	30
Inputting, Editing, and Printing Text	33
Inserting Phrases, and the Current Date and Time	36
Time Stamp Formats	37
Saving Text in Phrase Memory	37
Importing Screen Text into a Label	39
Accumulating Multiple Text Strings and Printing a Single Label	41
Inserting an Image into a Label	44
Image Folder Contents	47
Capturing an Image from Your Computer Screen	48
Recalling and Deleting Past Print Jobs	49
Feeding and Cutting the Tape	51
Configuring Label Software Properties	52
Configuring Printing Properties	53
Editing Phrase Memory Text	58
Configuring Shortcut Menu Settings	59
Configuring Display Settings	59
Configuring Shortcut Menu Operation	60
Configuring Image Settings	61
Configuring Add-in Settings	63

Using Online Help	65
Visiting the CASIO Website	67
Appendix	68
Printing Problems	68
Error Messages	72
Label Creation Problems	73



About this manual...

Note the following important points when using this manual.

■ FA-B30 Basic Label Printing Software

- All mentions of “the FA-B30 Software” in this manual refer to the FA-B30 Basic Label Printing Software.

■ Windows operations are not covered.

This manual describes operation of FA-B30 Version 1.0 Basic Label Printing Software for Windows (98, 98SE, Me, 2000 Professional, XP) only. The explanations in this manual assume that you are already familiar with the following basic Windows operations.

- Click, double-click, right-click, drag, drag and drop, and other mouse operations
- Menu operations using the mouse
- Text input using the keyboard
- Common Windows window operations

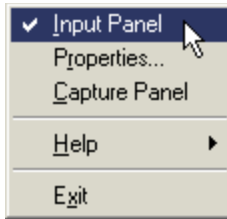
If you are unfamiliar with these or other Windows operations, see the documentation that came with your computer or the version of Windows you are using.

The FA-B30 Software has an on-line help function ([pages 65](#)) you can use to access operational information on your computer.

■ Menus and Buttons

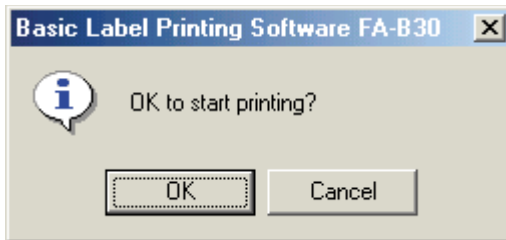
All explanations in this manual assume that on-screen menu and button operations are performed using the mouse.

- The following shows an example of executing a menu command.



Click **Input Panel** .

- The following shows an example of clicking a dialog box button.



Click **OK**.

■ Key Operations

Computer keyboard operations are indicated in this manual as follows: **Ctrl** key, **Shift** key, **Alt** key.

■ Screens

Note that the screen shots that appear in this manual may differ somewhat from the screens that appear on your computer screen.

Getting Acquainted

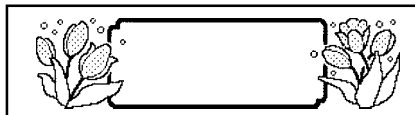
The FA-B30 Software makes it possible for you to create and edit labels on your computer.

- The FA-B30 Software is the latest version of the FA-950 software that comes bundled with the KP-C10, KP-C50 and KL-P1000 Label Printers.

FA-B30 Basic Label Printing Software Functions

■ Incorporate images into labels.

- 136 images included ([page 46](#))

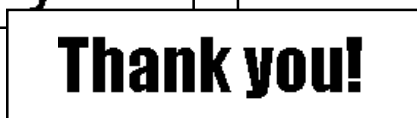
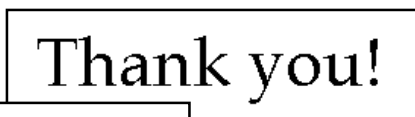


- Screen image capture ([page 48](#))



- The tape types you can use depend on your Label Printer model. See [page 11](#) for more information.

■ Use fonts installed on your computer in labels ([pages 27, 56](#)).

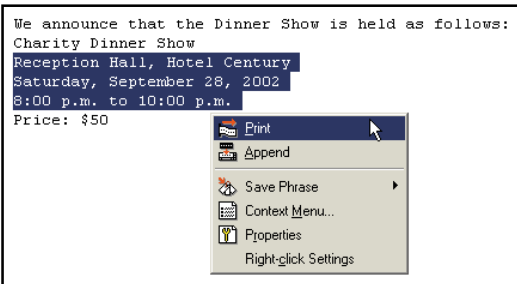


- Instantly print text you are inputting or editing with other software on your computer screen (page 39).



- Character size is adjusted automatically, for quick and easy printing.

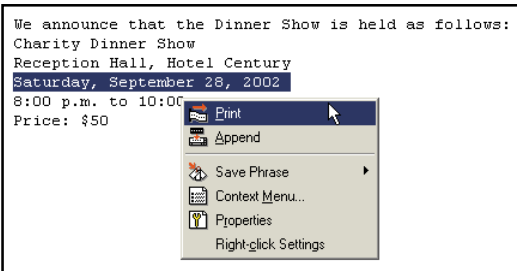
Selecting three lines



Reception Hall, Hotel Century
Saturday, September 28, 2002
8:00 p.m. to 10:00 p.m.



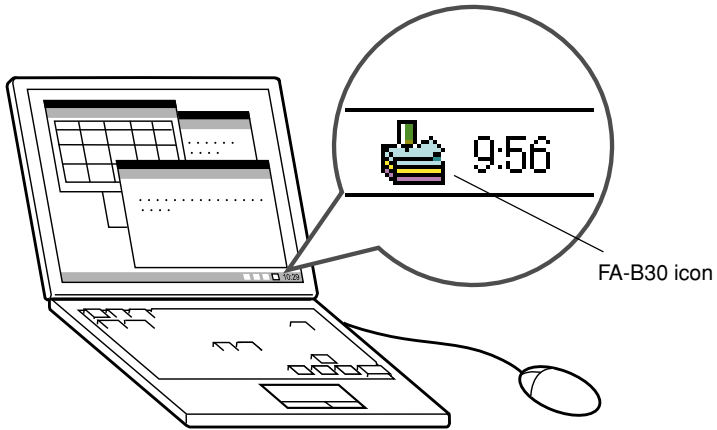
Selecting one line



Saturday, September 28, 2002



- **Keep it running for instant label printing whenever you need it. Does not interfere with other programs.**



- You can also shut down the FA-B30 Software when you want ([page 23](#)).

- **Register often-used terms and expressions for quick and easy input ([page 36](#)).**

- **USB port for easy connection to a computer**

- **View the image of a label on your computer screen before printing it.**

- Executing a print operation from the shortcut menu displays a preview dialog box that shows an image of what the printed label will look like.
- You can also display a preview window while inputting text into the Input Panel. You can configure the FA-B30 Software so the preview image is not displayed, if you want (“Preview Window,” [page 28](#)).

- **Store up to 100 past print jobs for later recall when you want to print again (“Recalling and Deleting Past Print Jobs,” [page 49](#)).**

Note

- Right-clicking your mouse while the FA-B30 Software is running normally displays the FA-B30 shortcut menu. You can also set up the FA-B30 Software so the shortcut menu of the application you are using for editing appears instead (“Configuring Shortcut Menu Operation,” [page 60](#)).

Supported Label Printer Models

This Label Software supports printing with the following CASIO Label Printing models (as of May 2002).

- KL-E20
- KL-P1000
- EL-5000W
- KP-C10
- KP-C50
- EL-700

■ Tape Types

There are two types of media that can be used for printing: EZ-LABEL PRINTER tape and thermal roll paper.

EZ-LABEL PRINTER Tape

This is a highly durable tape with strong adhesive. It can be used for videotape labels, office labeling, and other general label applications. This type of tape is available in a wide range of types and widths.

All printer models that support the FA-B30 Label Printing Software also support use of this tape. The tape width and type you can use depends on your CASIO Label Printer model. See the user documentation that comes with your Label Printer for more information.

Thermal Roll Paper

This type of media can be used to create stick-on memos. Its adhesive makes it possible to peel off and re-affix labels a number of times. The backing paper is divided into two separate pieces, making it easy to affix them to a computer monitor, notebook, etc. The following printer models support use of thermal roll paper.

- EL-5000W
- KP-C10
- KP-C50
- Each label is approximately 6 cm long.
- The KL-E20, KL-P1000 and EL-700 printers do not support printing on this type of tape.

Installing the FA-B30 Basic Label Printing Software

This section describes how to install the FA-B30 Basic Label Printing Software (FA-B30 Software). It contains information about the following items.

- How to install the FA-B30 Software
- How installation affects the shortcut menu
- How to disable automatic startup
- How to uninstall the FA-B30 Software

Before installing the FA-B30 Software, first visit the CASIO Website to download files that are required for proper installation.

After downloading files you will need to extract them before starting installation. See the instructions on the CASIO Website for details about how to do this.

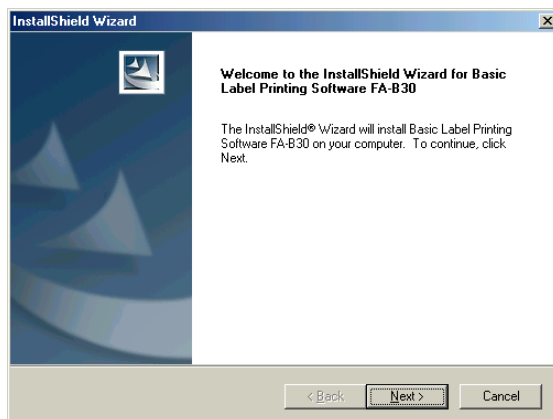
■ Installing the FA-B30 Software

Upgrading from FA-950

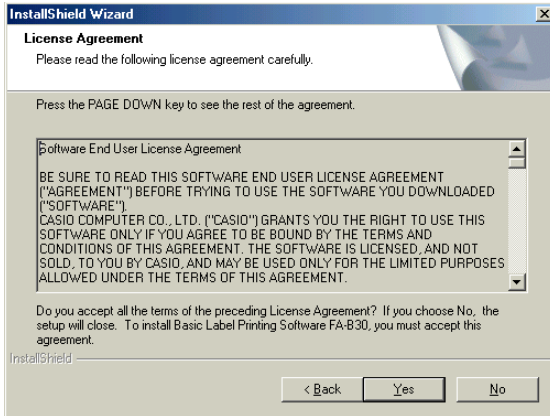
- The FA-B30 Software is upwardly compatible with the FA-950 Software. We recommend that you do not use different applications together on the same computer. If you absolutely need to use different applications together on the same computer for some reason, configure different modifier keys to display the FA-950 shortcut menu and to display the FA-B30 shortcut menu.

To install the FA-B30 Software

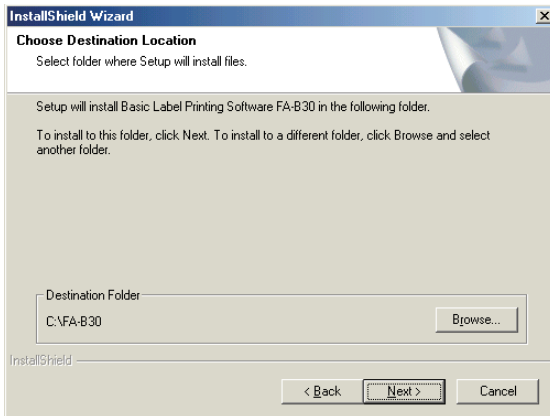
- 1 Disconnect the USB cable that connects your computer to the printer, and quit any applications you have running.
- 2 Use Windows Explorer to open the folder on your computer to which you expanded the application after downloading it, and double-click **Setup.exe**.
 - This displays a startup screen like the one shown nearby.



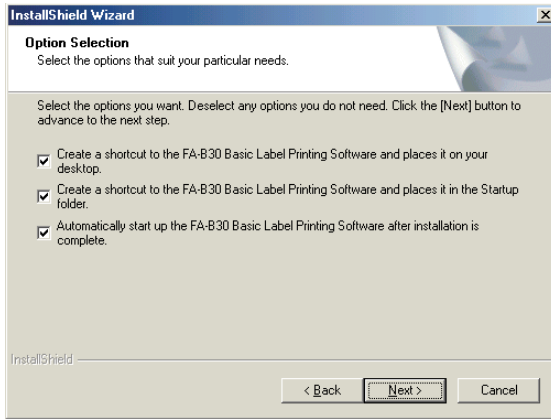
3 Click **Next** to start up the InstallShield wizard.



4 Carefully read the License Agreement, and then click **Yes**.



5 Follow the instructions that appear on the display until you get to the Option Selection screen.

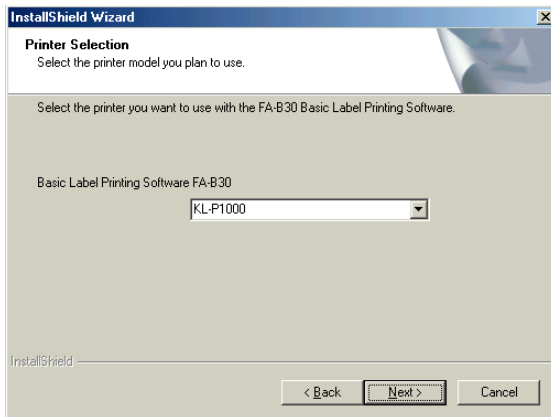



6 Use the Option Selection screen to select the options you want.

- Clear the check box of any option you want to deselect.
- If you do not want the FA-B30 Software to start up automatically and remain resident in your computer's memory, clear the "Create a shortcut to the FA-B30 Basic Label Printing Software and place it in the Startup folder." check box. You can also select or deselect auto startup after installing the software using the procedure under "Disabling Auto Startup of the FA-B30 Software" on [page 19](#).

7 After all of the options are configured the way you want, click **Next**.

- This displays the **Printer Selection** screen.



- 8** Select the printer model you want.
 - You can also change this setting after installing the software.
- 9** Click **Next** to continue with the installation.
 - If you select the “Automatically start up the FA-B30 Label Printing Software after installation is complete.” option in step 5, the software will start up automatically and display the Input Panel after installation is complete. To close the Input Panel, click the  button in its upper right corner.

■ **Connecting the Label Printer to Your Computer and Installing the Driver**

Perform the following procedure after you perform a new installation of the FA-B30 Software. You do not need to perform it if you are upgrading from the FA-950 Software.

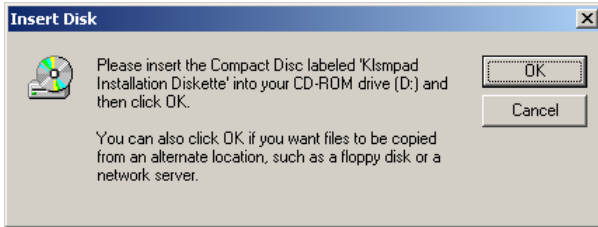
Windows 98 and Windows Me

- 1** Use the USB cable to connect your label printer to your computer. This will automatically start installation of the driver.
 - See the documentation that comes with your Label Printer for details about connecting.
- 2** Follow the instructions that appear on your computer screen.
 - During the installation procedure, you do not need to specify an install location for the USB driver. Because of this, you do not need to select the “Specify a location” check box.

Windows 2000 Professional and Windows XP

- 1** Use the USB cable to connect your label printer to your computer. This will automatically start installation of the driver.
 - See the documentation that comes with your Label Printer for details about connecting.
- 2** This causes a dialog box like the one shown nearby to appear.

● Windows 2000 Professional Users



- The screen shown here shows an example of what appears when you have a KL-P1000 printer connected. The model number in the dialog box text that appears on your computer screen will show the printer model you have connected to your computer. Installation steps are the same, regardless of printer model.

● Windows XP Users



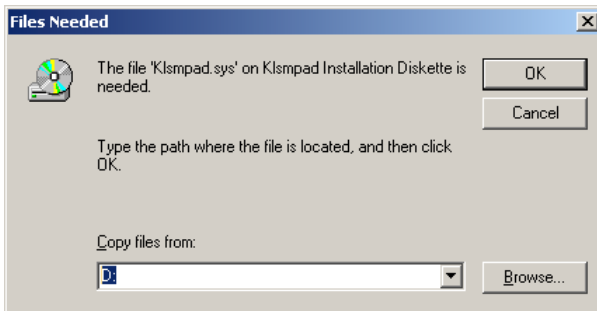
- When the screen shown above appears, select “Install the software automatically (Recommended)”, and then click **Next**.
- This causes the screen shown below to appear.



Click **Continue Anyway**, and the same screen as the one shown above for Windows 2000 Professional appears.

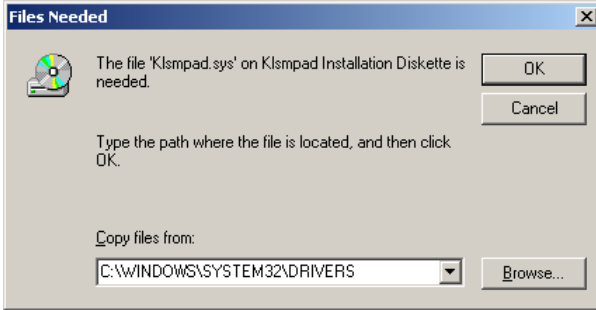
3 Click **OK**.

- This displays a dialog box like the one shown nearby.



- The default setting that appears in the **Copy files from:** box depends on your computer system setup.

4 In **Copy files from:**, input “C:\WINDOWS\SYSTEM32\DRIVERS”.



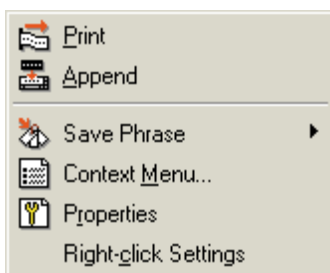
- You can select a driver file using the **Browse** button.
 - ① Click **Browse**.
 - ② On the dialog box that appears, navigate to the “C:\WINDOWS\SYSTEM32\DRIVERS” folder.
 - ③ Select the file whose name matches the name of the Label Printer you are using, and ends with the extension “.sys”. The KL-P1000 driver file, for example, is named “klsmmpad.sys”.
 - ④ After selecting the driver file you want, click **Open**.
- The following shows the driver that should be selected for each printer model. For any printer model not shown below, the driver name is the same as the printer model name.

Printer Model	Driver Name
KL-P1000	klsmmpad.sys
KP-C10	klsmsep.sys
KP-C50	klsmatt.sys

5 After everything is the way you want, click **OK** to install the driver.

Shortcut Menu Operation

Normally after you install the FA-B30 Software, right-clicking in the word processor, e-mail, or other application you are using displays the FA-B30 shortcut menu.



— FA-B30 shortcut menu*

* A different menu appears if you right-click the FA-B30 icon in the status area.

If you want to display the shortcut menu for the other application you are using, select **Context Menu** on the FA-B30 shortcut menu.

- See “Configuring Shortcut Menu Operation” on [page 60](#) for information about disabling display of the FA-B30 shortcut menu, and configuring modifier keys to control which shortcut menu appears.

Disabling Auto Startup of the FA-B30 Software

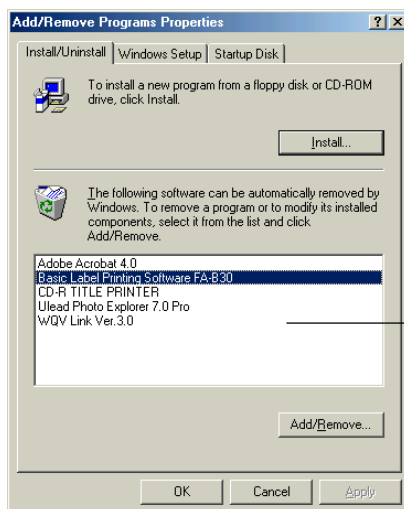
If you selected the auto startup option for the FA-B30 Software when you installed it ([page 14](#)), you can use the following procedure to disable auto startup.

- 1 Right-click the Windows **Start** button.
- 2 On the menu that appears, click **Open**.
 - If you are running Windows 2000 Professional or Windows XP, click **Open All Users**.
- 3 On the Window that appears, double-click **Programs**.
- 4 Double-click the **Startup** folder.
- 5 Delete the **Basic Label Printing Software FA-B30** icon.

Uninstalling the FA-B30 Software

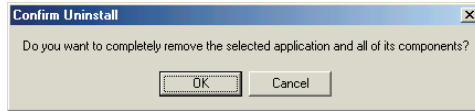
Use the following procedure when you need to uninstall the FA-B30 Software for some reason.

- 1 Quit the FA-B30 Software, if it is running.
- 2 From the Windows **Start** menu, click **Settings** and then **Control Panel**.
- 3 On the Control Panel, double-click the **Add/Remove Programs** icon. If you are running Windows XP, click **Add or Remove Programs** next.
- 4 On the **Install/Uninstall** tab of the dialog box that appears, click **Basic Label Printing Software FA-B30** in the list of installed applications.

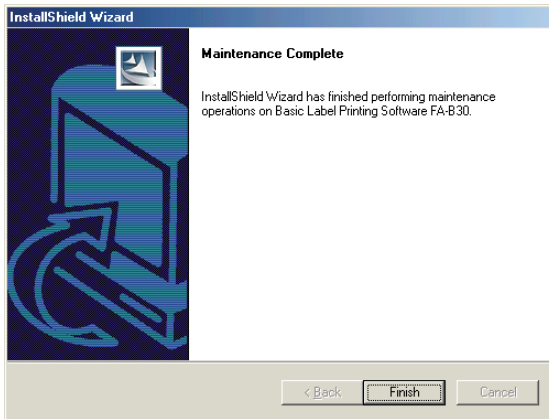


Installed applications

- 5** Click **Add/Remove**. If you are running Windows 2000 Professional or Windows XP, click **Change/Remove**.
- This starts up the InstallShield wizard, and displays a dialog box like the one nearby.



- 6** Click **OK**.
- This displays the screen shown nearby.



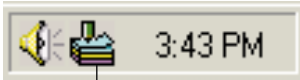
- 7** Click **Finish**.

Starting Up and Quitting the FA-B30 Software

Start Up

You do not need to perform this procedure if the FA-B30 icon is already in the status area, which indicates the FA-B30 Software is already running.

Windows status area (normally located in the lower right corner of your screen)



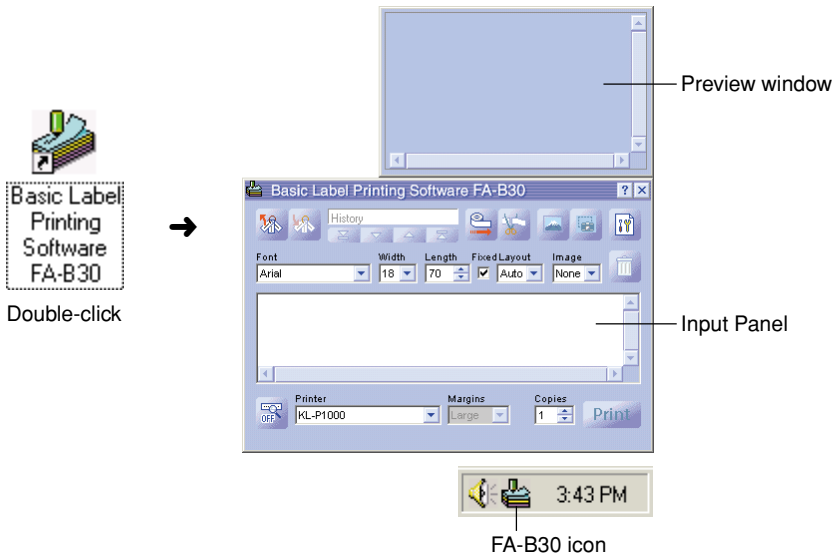
FA-B30 icon (Indicates Label Software is running.)

To start up the FA-B30 Software

- 1 On the Windows desktop, double-click the FA-B30 Basic Label Printing Software icon.

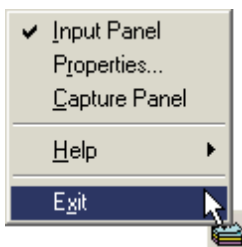
This starts up the FA-B30 Software and displays the Input Panel and the preview window. It also causes the FA-B30 icon to appear in the Windows status area.

- You can also start up by clicking the following: **Start → Programs → FA-B30 Basic Label Printing Software → FA-B30 Basic Label Printing Software**. What you need to click may be different, depending on the folder where you installed the FA-B30 Software.



Quitting

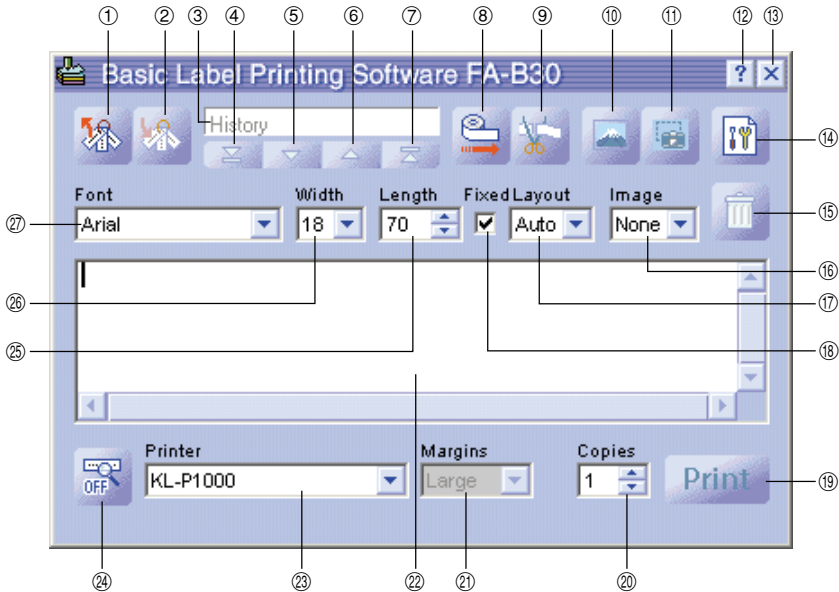
- 1 Right-click the FA-B30 in the Windows status area.
- 2 On the menu that appears, click **Exit**.
This quits the FA-B30 Software, which causes the FA-B30 icon to disappear from the status area.



User Interface

This section explains all of the screens and menus that appear on your computer display while you are using the FA-B30 Software. For full details about operational procedures, see the pages that are referenced in this section.

Input Panel



① Recall Phrase Button

Recalls a previously saved term or expression for insertion into the Text Input Box.

- See “Inserting Phrases, and the Current Date and Time” on [page 36](#).

② Save Phrase Button

Saves the text that is highlighted in the Text Input Box into phrase memory.

- See “Saving Text in Phrase Memory” on [page 37](#).

③ History Box

Displays a history of past print jobs.

- See “To recall a past print job” on [page 49](#).

- ④ **Top Button**
Displays the oldest entry in the history of past print jobs.
 - See “To recall a past print job” on [page 49](#).
- ⑤ **Back Button**
Displays the next older job in the history of past print jobs.
 - See “To recall a past print job” on [page 49](#).
- ⑥ **Forward Button**
Displays the next newer entry in the history of past print jobs.
 - See “To recall a past print job” on [page 49](#).
- ⑦ **New Button**
Displays the text you are currently editing.
 - See “To recall a past print job” on [page 49](#).
- ⑧ **Tape Feed Button**
Feeds the tape.
 - See “To feed the tape” on [page 51](#).
- ⑨ **Tape Cut Button**
Cuts the tape. This function is supported only for label printers that are equipped with an auto cutter.
 - See “To cut the tape” on [page 51](#).
- ⑩ **Insert Image Button**
Displays a window for selecting an image.
 - See “To insert an existing image into a label” on [page 46](#).
- ⑪ **Capture Image Button**
Captures an image from your computer screen for pasting into a label.
 - See “To capture an image from your computer screen” on [page 48](#).
- ⑫ **Help Button**
Displays online help.
 - See “Using Online Help” on [page 65](#).
- ⑬ **Close Button**
Closes the Input Panel.
- ⑭ **Properties Button**
Displays a Label Software properties dialog box.
 - See “Configuring Label Software Properties” on [page 52](#).

15 Trash Button

Deletes the contents of the Text Input Box. If the contents of the Text Input Box are a past print job selected using the History Box, clicking this button deletes the past job.

- See “Inputting, Editing, and Printing Text” on [page 33](#), and “To delete a past print job” on [page 50](#).

16 Image Box

Shows the Image paste size and location.

17 Layout Box

Specifies the character size and number of lines. The contents of this box differ according to the type of tape being used for printing.

- See “Inputting, Editing, and Printing Text” on [page 33](#) and “Configuring Label Software Properties” on [page 52](#).

18 Fixed Tape Length Check Box

Specifies whether the tape length should be fixed (checked) or variable (unchecked).

- See “Inputting, Editing, and Printing Text” on [page 33](#) and “Configuring Label Software Properties” on [page 52](#).

19 Print Button

Prints the text in the Text Input Box. This button becomes a Cancel Printing button while printing is in progress.

- See “Inputting, Editing, and Printing Text” on [page 33](#).

20 Copies Box

Specifies the number of copies of the label to be printed.

- See “Inputting, Editing, and Printing Text” on [page 33](#) and “Configuring Label Software Properties” on [page 52](#).

21 Margins Box

Specifies the size of the left and right margins of the tape.

- See “Inputting, Editing, and Printing Text” on [page 33](#) and “Configuring Label Software Properties” on [page 52](#).

22 Text Input Box

Use this box to input and edit text for printing.

- See “Inputting, Editing, and Printing Text” on [page 33](#).

23 Printer Model Box

Indicates the model name of the printer that is currently selected. When using a printer model that supports both EZ LABEL PRINTER tape and thermal roll paper, you can also use this box to select the tape type.

- See “Configuring Label Software Properties” on [page 52](#).

24 **Show/Hide Preview Button**

Toggles display of the print image preview on and off.

- You can resize the Preview Window by dragging its boundaries.
- See “Preview Window” on [page 28](#).

25 **Tape Length Box**

Specifies the tape length.

- See “Inputting, Editing, and Printing Text” on [page 33](#) and “Configuring Label Software Properties” on [page 52](#).

26 **Tape Width Box**

Specifies the tape width.

- See “Inputting, Editing, and Printing Text” on [page 33](#) and “Configuring Label Software Properties” on [page 52](#).

27 **Font Box**

Specifies the text font.

- See “Inputting, Editing, and Printing Text” on [page 33](#) and “Configuring Label Software Properties” on [page 52](#).

Important!

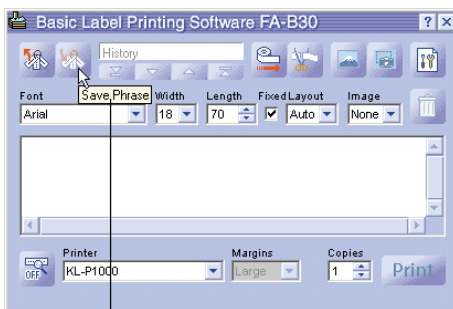
You can use the properties dialog box to configure the same settings that appear on the Input Panel. See “Configuring Label Software Properties” on [page 52](#) for more information.

- You can change the size of the Input Panel by dragging its borders.

Toolbar Button Name Display

Moving the mouse pointer over a toolbar button causes the name of the button to appear on your screen.

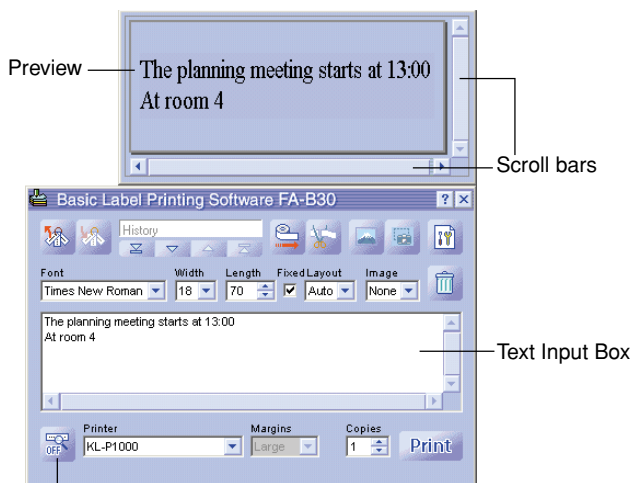
- Moving the mouse pointer to the Tape Length Box causes the allowable tape length settings to appear.





Tool bar button name

Preview Window

You can use the preview window to view the print image of a label before printing.



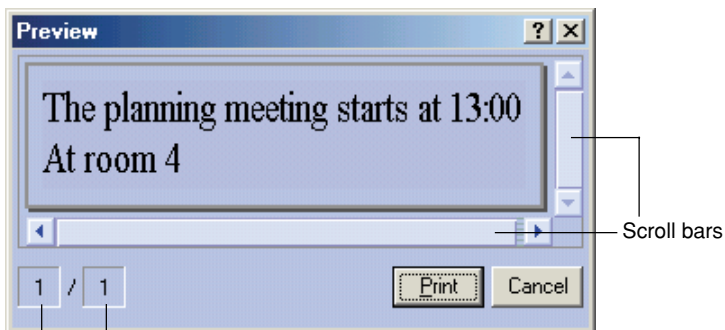
Show/Hide Preview Button

-  when preview is displayed.
-  when preview is not displayed

- The preview window shows what the text in the Text Input Box will look like when it is printed.
- Font, tape width, tape length, and layout settings are all reflected in the preview image.
- Clicking the Show/Hide Preview button toggles display of the preview window on and off, except when there is no text in the Text Input Box.
- Some label contents can cause the preview window to be too small, which makes the preview image appear ragged. If this happens, make the preview window larger by dragging its borders.
- You can use the scroll bars to view the areas of the label that do not appear within the preview window. If you are creating multiple labels, use the up/down scroll bar to scroll between labels.
- With the EL-5000W, you can change the size of the preview window to half actual size or double actual size. See “Configuring Display Settings” on [page 59](#) for more information.
- When laying out an image, you can also specify grayscale display of images in the preview window instead of binary display. See “Configuring Display Settings” on [page 59](#) for more information.

Preview Dialog Box

Whenever you have the Input Panel preview window hidden (display turned off), a preview dialog box appears automatically when you execute the Print command. You can use the preview dialog box to check the appearance of the printed label before proceeding with the print operation.



Current layout — Total number of layouts

- The preview dialog box shows what the text in the Text Input Box will look like when it is printed.
- The total number of layouts value shows how many different layouts you are printing with the current print operation. When this value is greater than 1, use the vertical scroll bar to scroll between the different layouts.
- The current layout value indicates which layout is currently displayed. If you are going to print three different layouts, for example, this value shows 1, 2, or 3, depending on the layout that is displayed.
- The current layout value and total number of layouts value do not indicate the number of labels that will be printed. You can determine the number of labels by multiplying the total number of layouts value by the **Copies** value you specified on [page 34](#).
- Some label contents can cause the preview dialog box to be too small, which makes the preview image appear ragged. If this happens, make the preview dialog box larger by dragging its borders.
- You can use the scroll bars to view the areas of the label that do not appear within the preview dialog box.
- Clicking the **Print** button starts actual printing.
- Clicking the **Cancel** button cancels the print operation.
- You can configure the FA-B30 Software so the preview dialog box does not appear before printing (“Configuring Display Settings,” [page 59](#)).

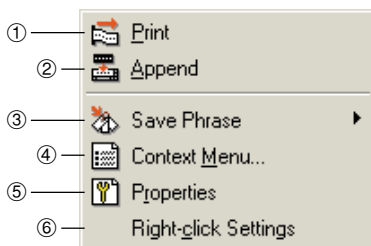
Shortcut Menu

This section describes the contents of the two shortcut menus that appear when you right-click your mouse while the FA-B30 Software is running.

- See “Configuring Shortcut Menu Operation” on [page 60](#) for information about to configure settings that control shortcut menu operations.

■ Shortcut menu that appears when you right-click the screen

The following is the shortcut menu that appears when you right-click your word processor, mail, or browser software screen while the FA-B30 Software is running.



* You can also configure the FA-B30 Software so items ③ through ⑥ do not appear on the shortcut menu (“Configuring Display Settings,” [page 59](#)).

① **Print**

Prints text that is currently selected (highlighted) in the other application you are using.

- See “To import and print a single string of text” on [page 39](#).

② **Append**

Copies text that is currently selected (highlighted) in the other application you are using into the Input Panel. After collecting the text from various locations, you can print it.

- See “Accumulating Multiple Text Strings and Printing a Single Label” on [page 41](#).

③ **Save Phrase***

Saves text into phrase memory.

- See “Saving Text in Phrase Memory” on [page 37](#).

④ **Context Menu***

Displays the shortcut menu of the other application (word processor, mail, browser) you are using.

⑤ **Properties***

Displays a dialog box of Label Software properties.

- See “Configuring Label Software Properties” on [page 52](#).

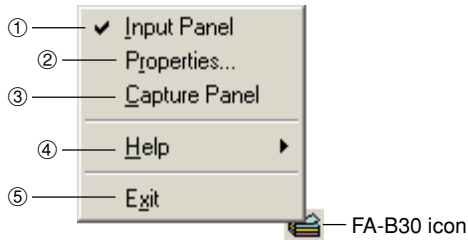
⑥ **Right-click Settings***

Displays a dialog box for configuring settings that control what happens when you right-click your mouse. This menu item appears when display of the **Properties** menu item is enabled.

- See “Configuring Shortcut Menu Operation” on [page 60](#).

■ Shortcut menu that appears when you right-click the FA-B30 icon

The following is the shortcut menu that appears when you right-click the FA-B30 icon in the Windows status area.



① Input Panel

Displays the Input Panel.

- See “Input Panel” on [page 24](#).

② Properties

Displays a dialog box of Label Software properties.

- See “Configuring Label Software Properties” on [page 52](#).

③ Capture Panel

Displays the capture panel, which you can use to capture an image from your computer screen without displaying the Input Panel.

- See “To capture an image from your computer screen” on [page 48](#).

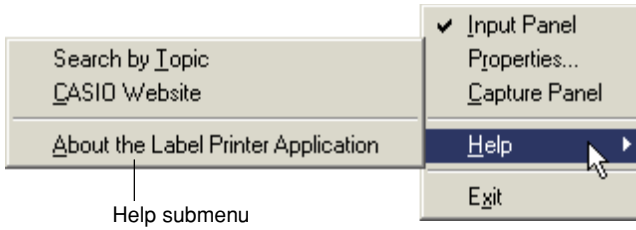


Capture Panel

④ **Help**

Displays a help submenu.

- See “To access help from the status area icon” on [page 66](#), “Visiting the CASIO Website” on [page 67](#), and “To view version information” on [page 66](#).



⑤ **Exit**

Quits the FA-B30 Software.

- See “Quitting” on [page 23](#).



Inputting, Editing, and Printing Text

This section explains how to use the Input Panel to input and edit text, and then print it.

To input, edit, and print text

1 If the FA-B30 Software is already running, click the FA-B30 icon in the status area.

This displays the Input Panel. The preview window should also appear, unless it is hidden ([page 28](#)).

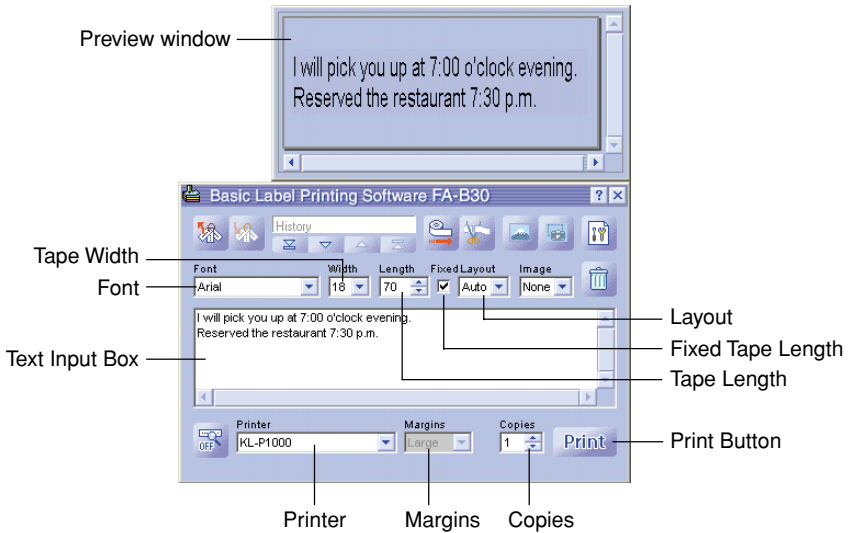
- If the FA-B30 Software is not running, double click the **FA-B30** icon on your Windows desktop. After the Input Panel appears, proceed with step 2.

2 Use the Text Input Box to input and edit the text you want to print.

- The contents of the preview window will change as you input and edit the text.
- Clicking the Trash button deletes all of the text in the Text Input Box.
- You can input up to 255 characters per line. A carriage return will be inserted automatically if your input exceeds this limit.
- The allowable number of characters per line is further limited when you are using a fixed tape length. A carriage return is inserted automatically whenever your input surpasses the maximum allowable line length.
- See “Input Panel” on [page 24](#) for information about specifying font, tape width, tape length, and other settings.
- See “Inserting an Image into a Label” on [page 44](#) for information about inserting an image into a label.
- See “Inserting Phrases, and the Current Date and Time” on [page 36](#) for information about inserting often-used phrases and the current date and time into a label.
- See “Configuring Add-in Settings” on [page 63](#) for information about printing mirror images onto iron transfer tape.

3 Configure **Font**, **Tape Width**, **Tape Length**, and **Layout** settings.

- Your settings will be reflected in the preview window, so you can see what your printed label will look like.
- If you have **Auto** selected for **Layout**, the size of text will be adjusted automatically so it fits within the specified tape length. If you have **Title** specified for **Layout**, the first line will be middle size, while all remaining line will be small size text.
- The tape length setting is ignored when you are printing to thermal roll paper.
- To specify a fixed-length tape, select the “Fixed” check box. The length of the tape changes automatically in accordance with the text when this check box is cleared.
- Note that some settings may not be available when using a label printer model that does not support them.



4 Check to make sure the Label Printer is connected correctly to your computer.

You can connect the Label Printer to your computer any time before you click the **Print** button in step 6.

5 Specify the number of copies and margin size.

Some Label Printer models do not support variable margin settings.

6 Click the **Print** button.

- This causes a confirmation message to appear.
- If you do not have the preview window displayed along with the Input Panel, the preview dialog box will appear at this time.

7 Click **OK**.

- This starts actual printing.
- You can also start printing by holding down **Alt** and pressing **P**.
- To cancel the print operation, click **Cancel**.
- Clicking the **Stop** button stops printing. You can also stop printing by holding down **Alt** and pressing **S**.
- If the preview dialog box appeared in step 6, click **Print** to start printing.

Important!

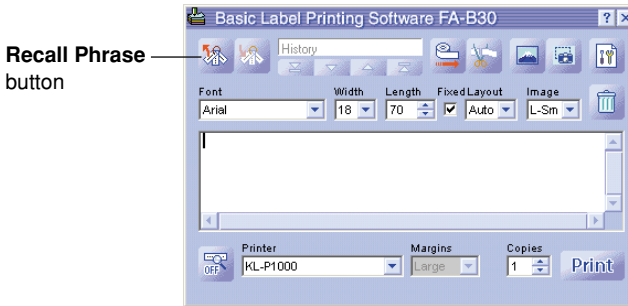
- Never disconnect the cable between the Label Printer and computer while printing is in progress.

Inserting Phrases, and the Current Date and Time

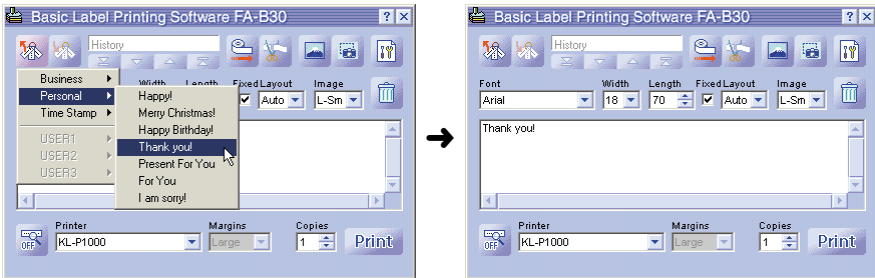
The FA-B30 Software comes pre-programmed with 103 different often-used expressions and phrases that you can recall and input into a label. In addition, you can also store your own phrases for instant recall when you need them.

To insert phrases, and the current date and time

- 1 On the Input Panel, click the **Recall Phrase** button. This displays a menu of phrase categories.



- 2 Align the mouse pointer with the category of the phrase you want to input. On the submenu that appears, click the phrase you want to input.
 - To input a date and time, select the **Time Stamp** category.



Time Stamp Formats

Clicking this menu item:	Inputs this:*
mm/dd/yy	10/18/02
dd/mm/yyyy	18/10/2002
yyyy-mm-dd	2002-10-18
dd-mmm-yy	18-Oct-02
d mmmm yyyy	18 October 2002
h:mm	14:00
h:mm AM/PM	2:00 PM

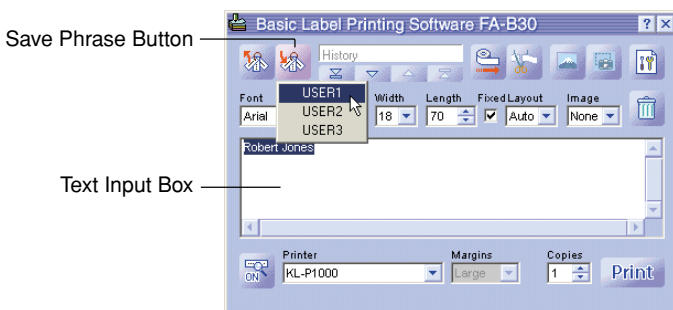
* The input examples shown here are what would be input when the current date and time setting of your computer is October 18, 2002, 2:00 pm.

Saving Text in Phrase Memory

Three categories named USER 1, USER 2, and USER 3 are provided for saving your own original phrases and expressions in phrase memory. Each category can hold up to 30 phrases.

To save a text in phrase memory

- 1 On the Input Panel, select (highlight) the text you want to save.
- 2 Click the **Save Phrase** button.
This displays a group selection menu.



- You can also save text that is selected on a part of the screen outside the Text Input Box as well. Right-click the selected text and then click **Save Phrase** on the shortcut menu that appears. Note that depending on how you have the FA-B30 Software configured, the **Save Phrase** item may not appear.
- See “Configuring Shortcut Menu Settings” on [page 59](#) for information about displaying the **Save Phrase** item.

- 3 Click the group where you want to save the text.
The highlighted text is saved into phrase memory.

■ Editing Phrase Memory Text

See “Editing Phrase Memory Text” on [page 58](#) for information about deleting and changing the order of phrase memory text.

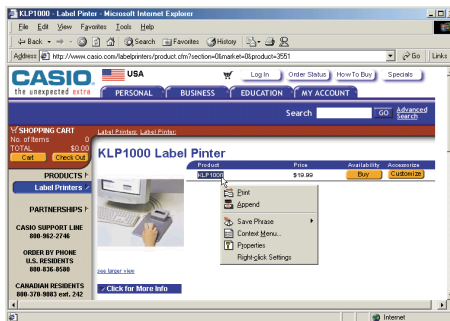
Importing Screen Text into a Label

This section explains how to import text that is selected on a word processor, browser, or other application screen into a label for printing. You can import a single string of text, or you can accumulate multiple strings from different locations.

As an example, the following procedure shows how to import and print text from Microsoft® Internet Explorer.

To import and print a single string of text

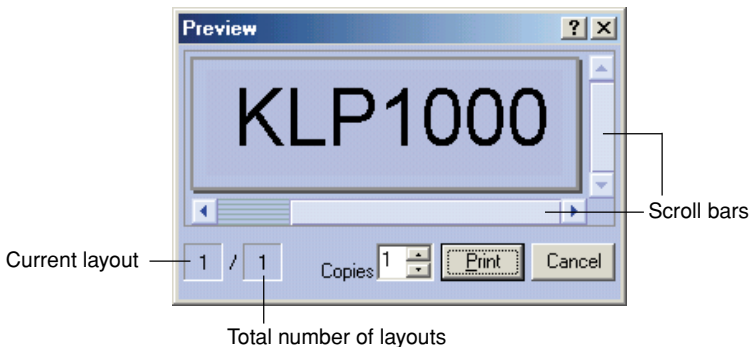
- 1** Check to make sure the Label Printer is connected correctly to your computer.
You can connect the Label Printer to your computer any time before you click the **Print** button in step 6.
- 2** If the FA-B30 Software is already running, highlight the text you want to print.
 - You can input up to 255 characters per line. A carriage return will be inserted automatically if your input exceeds this limit.
 - The allowable number of characters per line is further limited when you are using a fixed tape length. A carriage return is inserted automatically whenever your input surpasses the maximum allowable line length.
- 3** Right-click with your mouse.
 - If you want to use the shortcut menu of the other application (Internet Explorer, in this case), click **Context Menu** on the shortcut menu that appears.



4 On the shortcut menu that appears, click **Print**.

This causes the preview dialog box to appear.

- If you are using a Label Printer model that supports both EZ-LABEL PRINTER tape and thermal roll paper, printing is performed on the type of tape selected by the **Printer** setting of the Input Panel.
- The total number of layouts value shows how many different layouts you are printing with the current print operation. When this value is greater than 1, use the vertical scroll bar to scroll between the different layouts.
- The current layout value indicates which layout is currently displayed. If you are going to print three different layouts, for example, this value shows 1, 2, or 3, depending on the layout that is displayed.
- You can determine the number of labels by multiplying the total number of layouts value by the **Copies** value you specify in the next step.
- Some label contents can cause the preview dialog box to be too small, which makes the preview image appear ragged. If this happens, make the preview dialog box larger by dragging its borders.
- You can use the scroll bars to view the areas of the label that do not appear within the preview dialog box.
- See “Configuring Printing Properties” on [page 53](#) for information about changing the print image.



5 Specify the number of copies.

6 Click the **Print** button.

- This starts printing.
- You can also start printing by holding down **Alt** and pressing **P**.
- To cancel the print operation, click **Cancel**.
- Clicking the **Stop** button stops printing. You can also stop printing by holding down **Alt** and pressing **S**.

Important!

- Never disconnect the cable between the Label Printer and computer while printing is in progress.

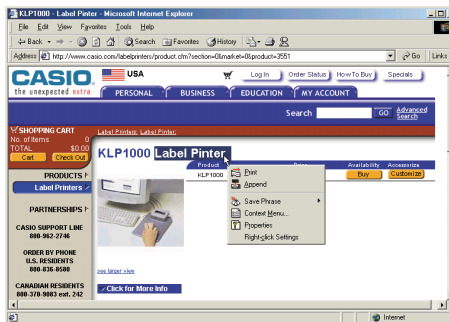
Accumulating Multiple Text Strings and Printing a Single Label

Perform the following steps when you want to accumulate a number of different text strings for printing in a single label.

As an example, the following procedure shows how to import and print text from Microsoft® Internet Explorer.

To accumulate multiple text strings and print a single label

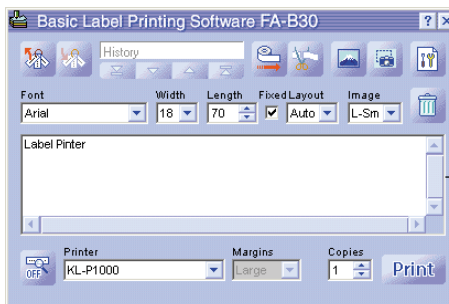
- 1 Check to make sure the Label Printer is connected correctly to your computer.
You can connect the Label Printer to your computer any time before you click the **Print** button in step 9.
- 2 If the FA-B30 Software is already running, highlight the first string of text you want to import.
- 3 Right-click the mouse.
 - If you want to use the shortcut menu of the other application (Internet Explorer, in this case), click **Context Menu** on the shortcut menu that appears.



4 Click **Append**.

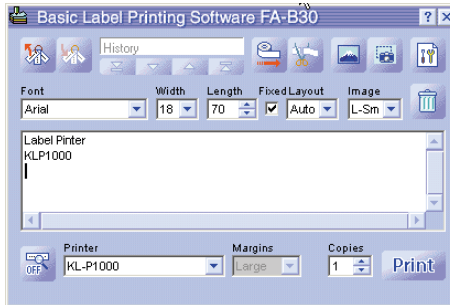
This displays the Input Panel with the text you selected in step 2 in the Text Input Box.

- See “Input Panel” on [page 24](#) for more information about the Input Panel.



5 Highlight the next string of text you want to import, right-click with your mouse, and then click **Append**.

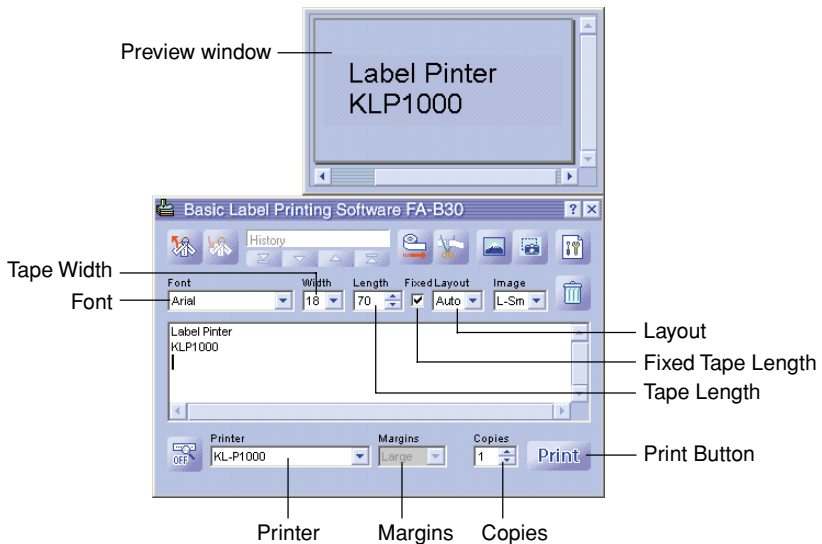
- This appends the new text to the text that is already in the Text Input Box.
- You can input up to 255 characters per line. A carriage return will be inserted automatically if your input exceeds this limit.
- The allowable number of characters per line is further limited when you are using a fixed tape length. A carriage return is inserted automatically whenever your input surpasses the maximum allowable line length.
- You can use the scroll bars to scroll the Text Input Box and view any text that does not fit.



6 After appending all the text strings you want, edit the text in the Text Input Box, if you want.

7 Configure **Font**, **Tape Width**, **Tape Length**, and **Layout** settings.

- Your settings will be reflected in the preview window, so you can see what your printed label will look like.
- If you have **Automatic** selected for **Layout**, the size of text will be adjusted automatically so it fits within the specified tape length. If you have **Title** specified for **Layout**, the first line will be middle size, while all remaining line will be small size text.
- The tape length setting is ignored when you are printing to thermal roll paper.
- To specify a fixed-length tape, select the “Fixed” check box. The length of the tape changes automatically in accordance with the text when this check box is cleared.
- Note that some settings may not be available when using a label printer model that does not support them.



8 Specify the number of copies and margin size.

9 Click the **Print** button.

This causes a confirmation message to appear.

- If you do not have the preview window displayed along with the Input Panel, the preview dialog box will appear at this time.

10 Click **OK**.

- This starts actual printing.
- You can also start printing by holding down **Alt** and pressing **P**.
- To cancel the print operation, click **Cancel**.
- Clicking the **Stop** button stops printing. You can also stop printing by holding down **Alt** and pressing **S**.
- If the preview dialog box appeared in step 9, click **Print** to start printing.

Important!

- Never disconnect the cable between the Label Printer and computer while printing is in progress.

Inserting an Image into a Label

This Label Software comes with a collection of images that you can insert into your labels. You can also capture an image from your PC screen into a label. Inserting an image into a label consists of the following steps.

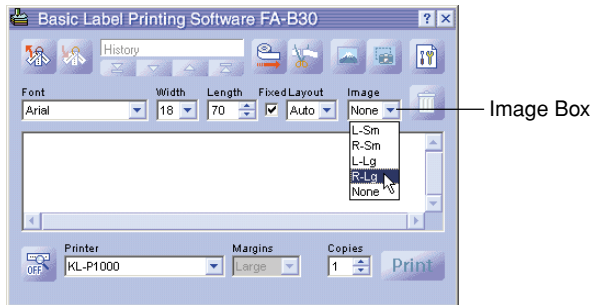
- Specify the location and size of the image.
- Specify an existing image or capture a new one.

Note that you can adjust the size and location of an image after you insert it into a label.



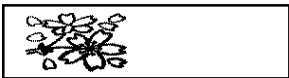



- A captured image that has fine gray scaling may not look good when printed in a label. When capturing an image to insert into a label, it is best to stick with those that have clearly defined blacks and whites.

To specify the location of the image

- 1 Use the Image Box to specify the insert location and size of the image.



The following shows examples of what each of the available options does.

Left Small	
Right Small	
Left Large	
Right Large	
Full Tape	
None	

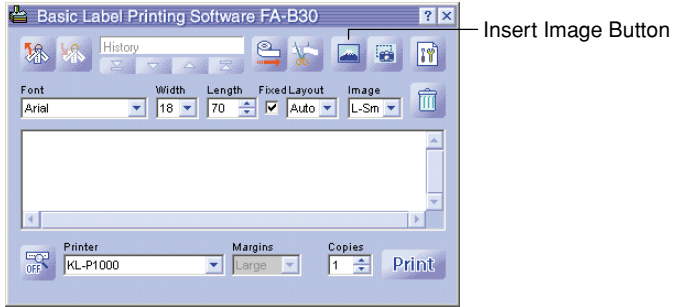
- You can overlay text and images with the **Full Tape** option. If you select **Full Tape** while the Fixed Tape Length check box is cleared, a preview image does not appear in the preview window until you input some text.
- Note that the image is not inserted when **None** is selected.
- Note that the text input range is smaller when any setting other than **None** is selected in the Image Box.

2 After specifying the location and size of the image, perform the steps under “To insert an existing image into a label” or “To capture an image from your computer screen” on the following pages.

To insert an existing image into a label

1 Click .

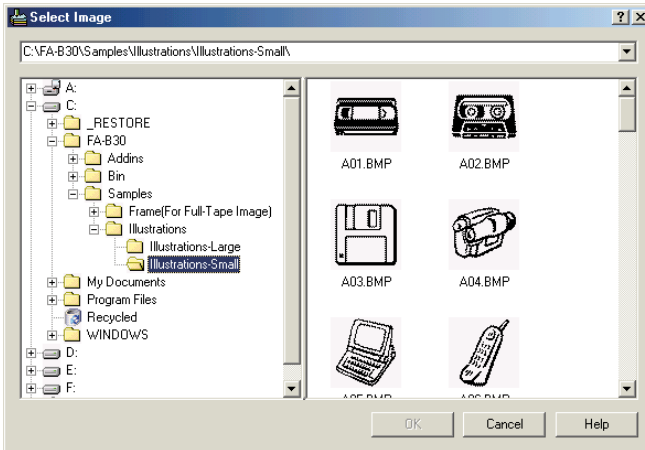
This displays an image selection window.



- Note that the Insert Image Button appears dimmed, which means it is unavailable, when **None** is selected in the Image Box.

2 Click the folder that contains the image you want on the left pane of the window, and then click the image you want on the right pane.

- See “Image Folder Contents” on the next page for information about the types of images stored in each folder.



3 After selecting the image you want, click **OK**.

This inserts the image you selected into the label using the location and size settings you specified on [page 44](#).

Image Folder Contents

The FA-B30 Version 1.0 Basic Label Printing Software comes with 136 sample images. The images are contained in the folders named **Illustrations** and **Frames**, which are located in **FA-B30 – Samples**. The following describes the types of sample images that are available, and where you can find them.

■ Illustrations – Illustrations-Small

- 44 fun graphic images, measuring 128 × 128 pixels.
- The perfect size for EL-700 18mm tape.

■ Illustrations – Illustrations-Large

- 44 fun graphic images, measuring 256 × 256 pixels.
- The perfect size for EL-5000W 18mm tape.

■ Frame (For Full-Tape Image) – For EZ-LABEL Printer Tape (Width-Small)

- A collection of 12 frames measuring 256 × 64 pixels.
- The aspect ratio (width:height) is 4:1. Best layout results are achieved using a tape with a similar aspect ratio.*

■ Frame (For Full-Tape Image) – For EZ-LABEL Printer Tape (Width-Medium)

- A collection of 12 frames measuring 384 × 64 pixels.
- The aspect ratio (width:height) is 6:1. Best layout results are achieved using a tape with a similar aspect ratio.*

■ Frame (For Full-Tape Image) – For EZ-LABEL Printer Tape (Width-Large)

- A collection of 12 frames measuring 512 × 64 pixels.
- The aspect ratio (width:height) is 8:1. Best layout results are achieved using a tape with a similar aspect ratio.*

■ Frame (For Full-Tape Image) – For Memo Tape

- A collection of 12 frames measuring 400 × 64 pixels.
- The perfect size for thermal roll paper.*

* When you have **Full Tape** selected in the **Layout** box on the **Image** tab of the properties dialog box (or **Full Tape** selected in the Image box of the Input Panel), be sure to input enough space and adjust the position of text so it does not overlap with image elements.

Capturing an Image from Your Computer Screen

Perform the following steps when you want to capture an image from your computer screen and incorporate it into a label.

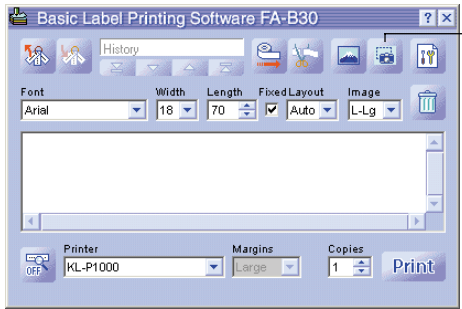
To capture an image from your computer screen

1 Display the screen that contains the image you want to capture.

2 Click .

This closes the Input Panel.

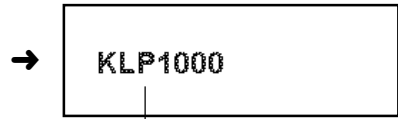
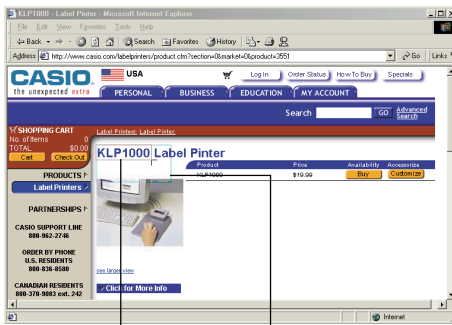
- The Capture Image Button appears dimmed, which means it is unavailable, when **None** is selected in the Image Box.
- You could also start the image capture operation by clicking the Capture Panel instead of the Capture Image button. You can use the Capture Panel to capture an image without displaying the Input Panel. See “Shortcut menu that appears when you right-click the FA-B30 icon” on [page 31](#) for more information.
- To cancel the capture operation, press the **Esc** key.



Capture Image Button

3 Drag the mouse pointer on the screen so the area to be captured is enclosed within the selection boundary.

- The area within the capture boundary is the image that will be captured.



The image within the boundary is inserted into the label.

The area where you drag is surrounded by a selection boundary.

These guidelines indicate an area that corresponds to the label layout size.

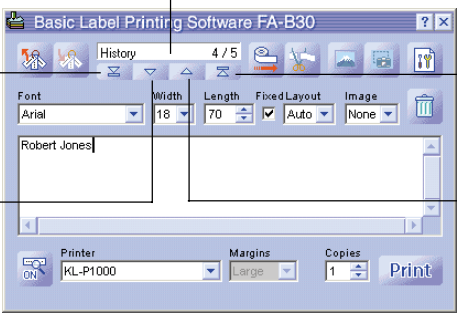
Recalling and Deleting Past Print Jobs

The FA-B30 Software stores up to 100 of the last jobs you have printed. You can recall print jobs for re-printing or editing, and delete jobs you no longer need.

To recall a past print job

- 1 On the Input Panel, use the **Top**, **Back**, **Forward**, and **New** buttons to display the print job you want to recall.

Indicates the total number of print jobs and the currently displayed print job number. This example indicates this is the fourth print job out of a total of five jobs.



The screenshot shows the 'Basic Label Printing Software FA-B30' window. At the top, a 'History' dropdown menu is set to '4 / 5'. Below it, a list of print jobs is shown with the text 'Robert Jones'. To the right of the list are fields for 'Font' (Arial), 'Width' (18), 'Length' (70), 'Fixed Layout' (checked), and 'Image' (None). At the bottom, there are fields for 'Printer' (KL-P1000), 'Margins' (Large), and 'Copies' (1), along with a 'Print' button.

Top Button
Displays the oldest entry in the history of past print jobs.

Back Button
Displays the next older job in the history of past print jobs.

New Button
Displays the contents of the label you are currently editing.

Forward Button
Displays the next newer entry in the history of past print jobs.

- If you already have the FA-950 Software installed on your computer and upgrade to the FA-B30 Software, any existing phrase memory and print history data will be passed on to the FA-B30 Software.

2 Input new text, edit the existing text, or print the label.

- See “Inputting, Editing, and Printing Text” on [page 33](#) for more information.

To delete a past print job

- 1 Display the past print job you want to delete.
 - See step 1 under “To recall a past print job” above.
- 2 Click the Trash Button.
This deletes the displayed print job.

The print job count is reduced by 1.



Feeding and Cutting the Tape

Perform the following steps when you want to feed or cut the tape on the printer connected to your computer.

- Tape feed and tap cut operations are not supported by certain printer models.

To feed the tape

Click .

To cut the tape

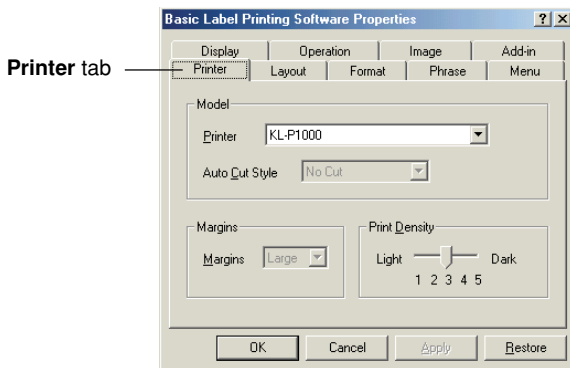
Click .

Configuring Label Software Properties

Label Printer properties let you control display of the Input Panel and various other Label Software features and functions.

To configure Label Software properties

- 1 On the Input Panel, click the Properties Button.
This should display the **Printer** tab of the properties dialog box.



- You can also display the properties dialog box by right-clicking the FA-B30 icon in the status area and then clicking **Properties** on the shortcut menu that appears.

- 2 Use the procedures on the following pages to configure the settings you want.

- 3 After you are finished, click **OK** to apply your settings and close the properties dialog box.
 - To close the properties dialog box without saving any settings, click **Cancel**.
 - To apply your settings without closing the properties dialog box, click **Apply**.
 - To return settings to their initial defaults, click **Restore**.

Configuring Printing Properties

Use the **Printer**, **Layout**, and **Format** tabs to configure printing properties.

To configure printing properties

1 Click the **Printer** tab.

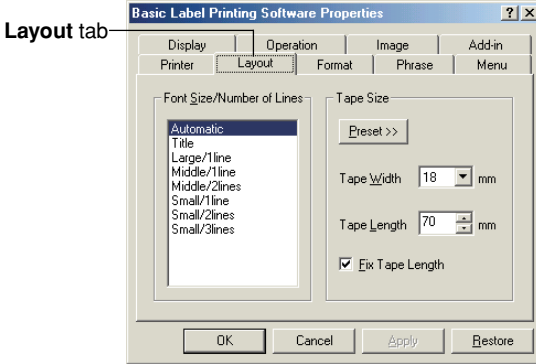
2 Configure the settings described below.

- Some Label Printer models do not support variable margin settings.
- The actual amount of tape that is fed with each margin setting depends on the Label Printer model you are using, as shown in the table below.

Model \ Setting	Large	Medium	Small
KL-E20/KL-P1000	Approx. 16 mm	–	Approx. 3 mm
EL-5000W (EZ-LABEL PRINTER Tape)	Approx. 18.8 mm	Approx. 10 mm	Approx. 3 mm
EL-700	Approx. 19.3 mm	Approx. 10 mm	Approx. 3 mm

- All values in the above tables are approximate.
- Normally, you should leave the **Print Density** set to 3. Change this setting only when printed characters are broken or too dark.
- With the KL-E20 Label Printer, margins (small) are inserted only during continuous printing, without tape cutting. If you want to have margins inserted, configure the FA-B30 Software as described below.
 - *Print without tape cutting.*
On the **Display** tab, clear the “Stop between prints for tape cut.” check box.
 - *Do not use a fixed tape length.*
On the **Layout** tab, clear the “Fixed Tape Length” check box.

3 Click the **Layout** tab.



4 Configure the settings described below.

- The options that appear in the **Font Size/Number of Lines** list depend on the tape width.
- When **Automatic** is selected under **Font Size/Number of Lines**, the Label Printing software automatically selects the optimum text size to fit within the specified tape length. Selecting **Title** causes medium size characters to be used in the first line of text, and small size characters for subsequent lines.
- Clicking the **Preset** button displays a menu of commonly used preset labels from which you can choose the one you want. Selecting a preset layout automatically selects the **Fix Tape Length** check box.
- The value you can specify for **Tape Length** depends on the Label Printer model, as shown in the table below.

KL-E20, EL-5000W (Thermal Roll Paper), KP-C10, KP-C50

Model	Tape Length Setting Range
KL-E20/KL-P1000	37 to 300 mm
EL-5000W	60 mm (fixed)
KP-C10/KP-C50	

EL-700

Margin*1	Auto Cut*1	Tape Cut Length*2	Tape Length Setting Range
Small	Half cut, full cut	29 to 300 mm	7 to 300 mm
	Full cut only	23 to 300 mm	
	No cut	–	
Medium	Half cut, full cut	36 to 300 mm	21 to 300 mm
	Full cut only	30 to 300 mm	
	No cut	–	
Large	Half cut, full cut	45 to 300 mm	39 to 300 mm
	Full cut only	45 to 300 mm	
	No cut	–	

EL-5000W (EZ-LABEL PRINTER Tape)

Margin	Auto Cut	Tape Cut Length	Tape Length Setting Range
Small	Half cut, full cut	28 to 300 mm	7 to 300 mm
	Full cut only	22 to 300 mm	
	No cut	–	
Medium	Half cut, full cut	35 to 300 mm	21 to 300 mm
	Full cut only	29 to 300 mm	
	No cut	–	
Large	Half cut, full cut	44 to 300 mm	39 to 300 mm
	Full cut only	44 to 300 mm	
	No cut	–	

*1 You can change the margin and auto cut settings on the **Printer** tab.

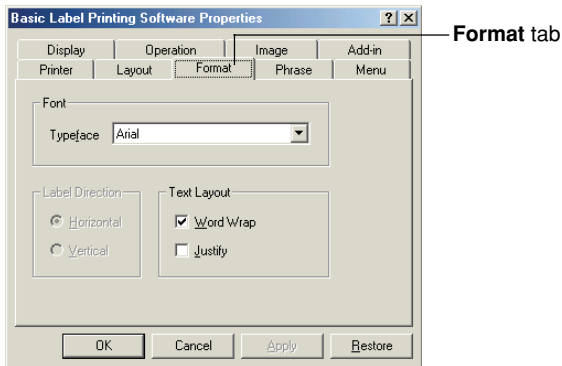
*2 If the length of the tape being cut is outside the tape cut range when you perform a half cut/full cut or a full cut only, the tape length will be longer than the specified tape length.

- The value you can specify for **Tape Width** depends on the Label Printer model, as shown in the table below. The printing width also depends on the printer model, and cannot be specified by you.

Model	Tape Width	Maximum Printing Width
KL-P1000	6mm / 9mm / 12mm / 18mm	7.5mm
KL-E20	6mm / 9mm / 12mm / 18mm	12mm*
EL-5000W (EZ-LABEL PRINTER Tape)	6mm / 9mm / 12mm / 18mm / 24mm	16mm
EL-5000W (Thermal Roll Paper)	13mm (Fixed)	8mm
EL-700	6mm / 9mm / 12mm / 18mm / 24mm	16mm
KP-C50	13mm (Fixed)	8mm
KP-C10	13mm (Fixed)	8mm

* When printing text only on the KL-E20, the maximum printing width is approximately 7.5mm.

5 Click the **Format** tab.



6 Configure the settings described below.

- Availability of the **Label Direction** setting depends on your computer's OS and the type of font being used for printing. Normally, this setting is **Horizontal**. The **Vertical** setting also becomes available if the OS you are using and the font that is specified supports vertical printing.
- For details about the **Word Wrap** and **Justify** settings, see "Word Wrap and Justification" below.

■ Word Wrap and Justification

The following examples show how the **Word Wrap** and **Justify** settings affect label text.

- Word Wrap / Justification

Example

Special Personal Computer Link software lets you incorporate images and data from your computer in
to labels.] — Carriage return inserted inside of “into.”

- Word Wrap / Justification

Example

Special Personal Computer Link software lets you incorporate images and data from your computer
into labels.] — Carriage return inserted in front of “into.”

- Word Wrap / Justification

Example

Special Personal Computer Link software lets you incorporate images and data from your computer
into labels.] — Carriage return inserted in front of “into,” and right side of text is aligned.

- Word Wrap / Justification

Example

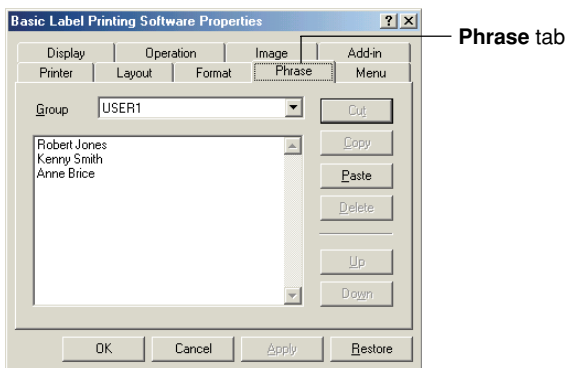
Special Personal Computer Link software lets you incorporate images and data from your computer in
to labels.] — Right side of text is aligned.

Editing Phrase Memory Text

Use the **Phrase** tab to edit phrase memory text you previously registered. You can cut, copy, paste, and delete text, and you can change the sequence of phrases.

To edit phrase memory text

- 1 On the properties dialog box, click the **Phrase** tab.



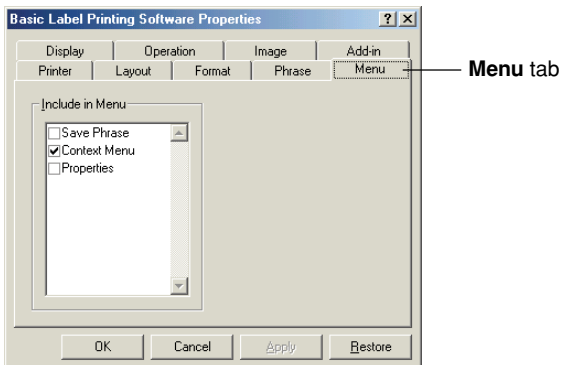
- 2 Select the group that contains the phrase you want to edit. This displays the phrases that are currently registered in the group.
- 3 Click the phrase you want to edit.
- 4 Edit the phrase.
 - Use the **Cut**, **Copy**, **Paste**, **Delete**, **Up**, and **Down** buttons to edit phrase text.
 - You can copy phrase text in one group and paste it into another group.
 - You can select multiple phrases by holding down the **Ctrl** key as you click.

Configuring Shortcut Menu Settings

Use the **Menu** tab to configure shortcut menu settings.

To configure shortcut menu settings

- 1 Click the **Menu** tab.



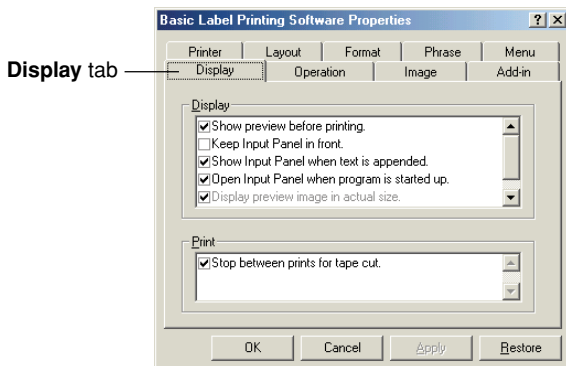
- 2 Select the check boxes of the items that you want to appear on the shortcut menu.

Configuring Display Settings

Use the **Display** tab to configure display settings.

To configure display settings

- 1 Click the **Display** tab.



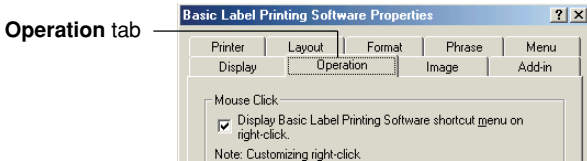
- 2** Select (check) and deselect (uncheck) the options you want.
- If you do not want the preview dialog box to appear each time you execute the print command, clear the “Show preview before printing.” check box.
 - You can resize the preview window if you are using an EL-5000W printer. Clearing the “Display preview image in actual size.” check box displays a preview window that is one-half actual size.
 - Select the “Display preview image in actual size.” check box to enable grayscale display of images.

Configuring Shortcut Menu Operation

Use the **Operation** tab to configure the type of shortcut menu that appears when you right-click your mouse. You can also specify a modifier key that lets you select the shortcut menu you want as you work.

To configure shortcut menu operation

- 1** Click the **Operation** tab.



- 2** Configure shortcut menu operation as described below.

When the check box of this option is cleared, the FA-B30 shortcut menu does not appear when you right-click your mouse.

When selected (checked):

- **Ctrl** + right-click displays the FA-B30 shortcut menu.
- Right-clicking only displays the shortcut menu of the other application you are using.

When selected (checked):

- **Alt** + right-click displays the FA-B30 shortcut menu.
- Right-clicking only displays the shortcut menu of the other application you are using.

When selected (checked):

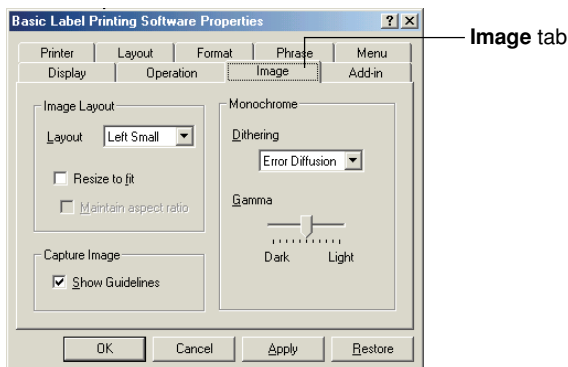
- **Shift** + right-click displays the FA-B30 shortcut menu.
- Right-clicking only displays the shortcut menu of the other application you are using.

Configuring Image Settings

Use the **Image** tab to make image layout settings, specify the monochrome conversion method, and to show or hide guidelines.

To configure image settings

1 Tap the **Image** tab.



2 Configure the image layout settings you want.

- Use the **Layout** box to specify the image location and size. The following shows the available settings and what each one does.

Left Small	
Right Small	
Left Large	
Right Large	
Full Tape	
None	

- Selecting the **Resize to fit** check box enlarges or reduces the image so it fits within the area specified by **Layout**. When this option is deselected, the image is inserted as-is at the location specified by **Layout**.
- Selecting the **Maintain aspect ratio** check box causes the width-to-length ratio of the image to be maintained when it is resized. Note that this option appears dimmed unless the **Resize to fit** check box is selected.
- The **Full Tape** layout can be selected for label printers other than the KL-P1000. The **Full Tape** lets you use the all of the tape's print area to layout an image.

3 Configure the monochrome conversion settings you want.

The explanation uses printing black text on white tape as an example.

- Use the **Dithering** setting to select the dithering method you want to use. The following are the available options.

Nearest Color: With this option, light color areas are made white, while dark color areas are made black. It is best when used for images that contain line drawings and text only.

Pattern: This option makes light color areas whiter and dark color areas blacker.

Error Diffusion: This option makes light color areas whiter and dark color area blacker, producing an appearance like you get when you photocopy a color photograph. Printing with this option takes longer than with **Pattern**, but results look better.

- Drag the **Gamma** slider left and right to adjust the relative darkness of an image.

4 Specify the guideline setting you want.

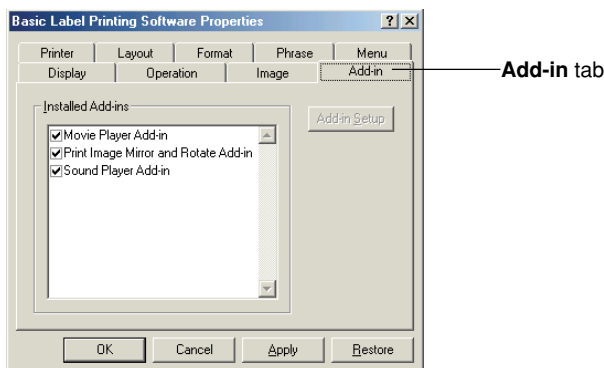
Selecting the **Shows Guidelines** check box displays guidelines indicating the specified image size whenever you insert an image into a label.

Configuring Add-in Settings

Use the **Add-in** tab to configure add-in settings.

To configure add-in settings

- 1 Click the **Add-in** tab.



- 2 Configure add-in settings as described below.

- The **Installed Add-ins** lists add-ins you already have installed. Currently enabled add-ins are those whose check boxes are selected.
- You download the latest add-ins from the CASIO Website and add them as needed. See “Visiting the CASIO Website” on [page 67](#) for more information.
- The **Add-in Setup** button becomes dimmed whenever you select an add-in name in the **Installed Add-ins** list by clicking it. Clicking the **Add-in Setup** button displays a dialog box for configuring the setup of the selected add-in. The following describes the settings you can configure for the preinstalled add-ins.

Sound Player Add-in

This add-in plays the contents of sound files whenever printing starts and ends. Simply input the paths to the respective sound files into the **Startup Sound File** and **Shutdown Sound File** boxes, and click **OK**. A **Browse** button can also be used to select sound files. You can check the contents of the selected sound file by clicking the **Preview** button.

Print Image Mirror and Rotate Add-in

This add-in makes it possible to create mirror images and to rotate the print image 180 degrees. Selecting the **Mirror Print** option reverses the print image for printing to iron transfer tape. The **Rotate 180°** image rotates the print image 180 degrees. Click the **OK** button after making the settings you want.

Movie Player Add-in

This add-in can be used to play a video file while printing is in progress. Simply input the path to the video file into the **Video File** box, and click **OK**. A **Browse** button can also be used to select the video file. You can check the contents of the selected video file by clicking the **Preview** button.

You can use **Zoom** to change the size of the playback screen, and **Display Location** to change the location of the playback screen. Selecting the **Mute** option mutes the audio portion of the video file.

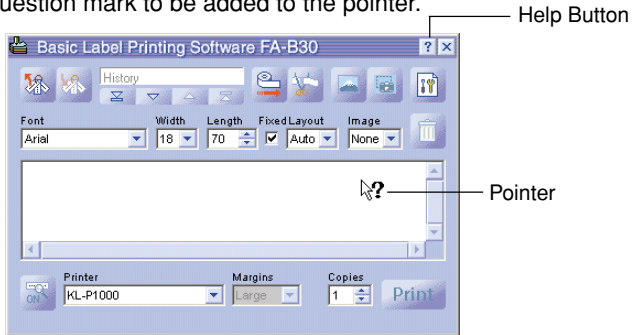
Using Online Help

You can access online help from the Input Panel, the properties dialog box, and from the FA-B30 icon in the status area. You can also display version information about the software.

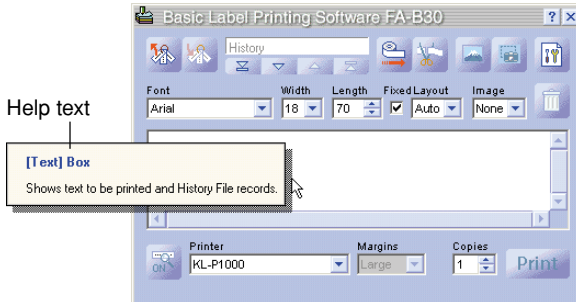
To access online help from the Input Panel or the properties dialog box

- 1 Click the help button.

This causes a question mark to be added to the pointer.



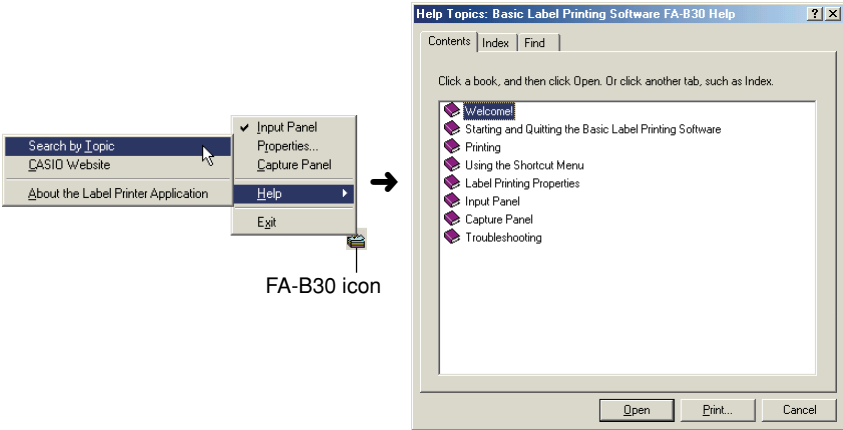
- 2 Move the pointer to the item or area for which you need help and then click.



- 3 After reading the help text, click with your mouse. This closes the help box.

To access help from the status area icon

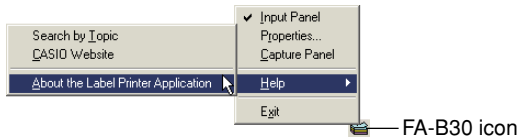
- 1 Right-click the FA-B30 icon in the status area.
- 2 Click **Help** and then **Search by Topic**.



- 3 This displays a Windows help screen.

To view version information

- 1 Right-click the FA-B30 icon in the status area.



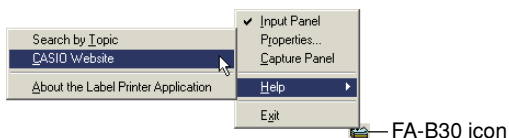
- 2 Click **Help** and then **About the Label Printer Application**. This displays version information.
- 3 After viewing the version information, click **OK**.

Visiting the CASIO Website

Perform the following steps when you want to visit the CASIO Website on the Internet for the latest information about CASIO Label Printers.

To visit the CASIO Website

- 1 Right-click the FA-B30 icon in the status area.



- 2 Click **Help** and then **CASIO Website**.
This accesses the CASIO Website and displays a page with the latest information about the CASIO Label Printer model you are using.

Appendix

Printing Problems

Tape does not come out of the printer.	
EZ-LABEL PRINTER tape printer	Thermal roll paper printer
<ul style="list-style-type: none"> • <i>Is the tape compartment cover closed?</i> Securely close the tape compartment cover. See the Label Printer's user's guide for details. • <i>Are you out of tape?</i> Replace the tape cartridge or thermal roll paper with a new one. See the Label Printer's user's guide for details. 	
<ul style="list-style-type: none"> • <i>Is tape jammed?</i> Disconnect the AC adaptor, remove the tape cartridge, and then remove the jammed tape. Use scissors to cut off the tape that was jammed. Reload the tape cartridge and then re-connect the AC adaptor. <p>Important! Never do any of the following while printing is in progress.</p> <ul style="list-style-type: none"> • Never allow the tape outlet to be blocked. • Never touch the tape coming out of the outlet. • Never open the tape cartridge compartment. • Never disconnect the AC adaptor. • Never disconnect the USB cable. <p>See the Label Printer's user's guide for details.</p>	<ul style="list-style-type: none"> • <i>Is tape jammed?</i> Remove the thermal roll paper and reload it correctly. <p>Important! Never do any of the following while printing is in progress.</p> <ul style="list-style-type: none"> • Never allow the tape outlet to be blocked. • Never touch the tape coming out of the outlet. • Never open the tape cartridge compartment. • Never disconnect the AC adaptor. • Never disconnect the USB cable. <p>See the Label Printer's user's guide for details.</p>
Tape comes out of the printer, but nothing is printed on it.	
EZ-LABEL PRINTER tape printer	Thermal roll paper printer
<ul style="list-style-type: none"> • <i>Did you input any text?</i> Input some text into the label. 	

Print quality is poor.	
EZ-LABEL PRINTER tape printer	Thermal roll paper printer
<ul style="list-style-type: none"> • <i>Are you using a proper print density setting?</i> Change the print density setting. See “To configure printing properties” on page 53. • <i>Is the tape cartridge or thermal roll paper loaded correctly?</i> Correctly load the tape cartridge or thermal roll paper. See the Label Printer’s user’s guide for details. • <i>Is the printer head or rubber roller inside the printer dirty?</i> Clean the printer head and rubber roller. See the Label Printer’s user’s guide for details. 	

Ink ribbon is coming out of the tape outlet together with the tape.	
EZ-LABEL PRINTER tape printer	Thermal roll paper printer
<ul style="list-style-type: none"> • <i>Was the ink ribbon slack when you loaded the tape cartridge?</i> Remove the tape cartridge and make sure the ink ribbon is not broken. Correctly load the tape cartridge. See the Label Printer’s user’s guide for details. <p>Important!</p> <ul style="list-style-type: none"> • Make sure you take up any slack in the ink ribbon before loading the tape cartridge into the Label Printer. • If the ink ribbon ever breaks, replace the tape cartridge with a new one. 	—

Printing stops part way through.	
EZ-LABEL PRINTER tape printer	Thermal roll paper printer
<ul style="list-style-type: none"> • <i>Is the printer head overheated?</i> The printer head heats up during printing. If you print a large number of consecutive labels or print labels that contain a large amount of black areas, the printer head can overheat, which causes printing to stop automatically. Simply leave the printer alone and the printing will resume when the print head cools down. 	

The tape does not cut.	
EZ-LABEL PRINTER tape printer	Thermal roll paper printer
<ul style="list-style-type: none"> • <i>Is tape jammed?</i> Remove the tape cartridge or thermal roll paper, and then remove the jammed label. See the Label Printer's user's guide for details. 	
<ul style="list-style-type: none"> • <i>Is tape cutter worn?</i> Contact your CASIO nearest dealer to have the cutter replaced. • <i>Is the No Cut option selected?</i> Select a different cutting option. • <i>Are you using a short label length (28mm or less with small margins, 35mm or less with medium margins, or 44mm or less with large margins)?</i> After printing is complete, use the cutter button to cut the tape. <p>Important!</p> <ul style="list-style-type: none"> • Available cutting options depend on the Label Printer model. See the Label Printer's user's guide for details. 	—

Half cutting is not performed.	
EZ-LABEL PRINTER tape printer	Thermal roll paper printer
<ul style="list-style-type: none"> • <i>Is half cutter worn?</i> Contact your nearest CASIO dealer to have the cutter replaced. • <i>Is the No Cut option selected as the Auto Cut Style option?</i> Change the Auto Cut Style option setting to Half Cut/Full Cut. <p>Important!</p> <ul style="list-style-type: none"> • Available cutting options depend on the Label Printer model. See the Label Printer's user's guide for details. • Make sure you take up any slack in the ink ribbon before loading the tape cartridge into the Label Printer. • Note that half cutting cannot be performed when you are using reflective tape, magnetic tape, or any other special tape. 	—

Tape does not adhere properly.

EZ-LABEL PRINTER tape printer

Thermal roll paper printer

- *Did you peel off the backing paper?*
Peel off the backing paper from the label. See the Label Printer's user's guide for details.
- *Are you trying to affix the label to a compatible type of surface?*
Make sure the surface or area where you are affixing the label is compatible. See the Label Printer's user's guide for details.

Error Messages

If this message appears:	Do this:
No connected device	Check the connection between the printer and computer. Check to make sure that the printer model specified on the Properties dialog box is the same as the printer that is connected to your computer. After correcting the problem, try printing again.
Tape size setting error	Check if the tape loaded in the printer is the right size. After correcting the problem, try printing again.
Cut setting error	The tape loaded in the printer is magnetic tape. Magnetic tape cannot be half cut using a printer's cutter. When using magnetic tap, change the Auto Cut Style setting to No Cut .
No tape is loaded in the printer or tape is jammed inside the printer	Check to make sure that tape is loaded, tape is not jammed, that the tape width is supported by the label printer model you are using, and that the tape cartridge is not out of tape. If tape is jammed, see "Printing Problems" on page 68 for more information.
The printer is busy. Wait until printing from the other application is complete and try again.	Wait until the other application is through printing and then try again.
There are too many characters to fit on the specified tape length. OK to adjust the tape length automatically?	Click OK if there is no problem with printing a long tape. To print a specific length, click Cancel to return to the Input Panel, change to a smaller character size, or reduce the number of characters. After you are finished, try printing again.

Label Creation Problems

Using the FA-B30 Basic Label Printing Software

- *Cannot append selected text into the Text Input Box.*
Try selecting the text you want and copying it to the Windows clipboard and then performing the append operation. With most applications, you can perform the copy operation by selecting the **Copy** command on the **Edit** menu.
- *Not enough memory to insert or print an image.*
If the message “There is not enough memory to execute that command.” appears when you try to insert an image into a label or print a label that contains an image, it could mean either of the following.
 - There is not enough memory to perform the operation. Quit other applications you have running and try again.
 - There is a problem with the Windows display driver. Contact the manufacturer of your computer for more information.
- *Images become all black when printing*
The image you are using may be too dark. Try either of the following to adjust image brightness.
 - Use Paint or some other graphic application to increase the brightness of the image.

Using Another Application

- *The shortcut menus of the other applications are different after installing this Label Software.*
While the FA-B30 Software is running in the background on your computer, right-clicking your mouse displays an FA-B30 shortcut menu. You can change how the right-click operation works by configuring the settings under “Configuring Shortcut Menu Operation” on [page 60](#).